

**3 MURRAYGATE - COSTA LIMITED
DUNDEE
DD1 2EE**

Gross Internal Area

	Sq Ft	Sq M
GROUND FLOOR	2390	222,03
FIRST FLOOR	2535	235,50
Total	4925	457,53

Net Internal Area

	Sq Ft	Sq M
GROUND FLOOR	2191	203,54
FIRST FLOOR	1999	185,71
Total	4190	389,25

Zoned Internal Area - Ground Floor

	Sq Ft	Sq M
Zone A	819	76,09
Zone B	898	83,42
Zone C	474	44,03
Total	2191	203,54

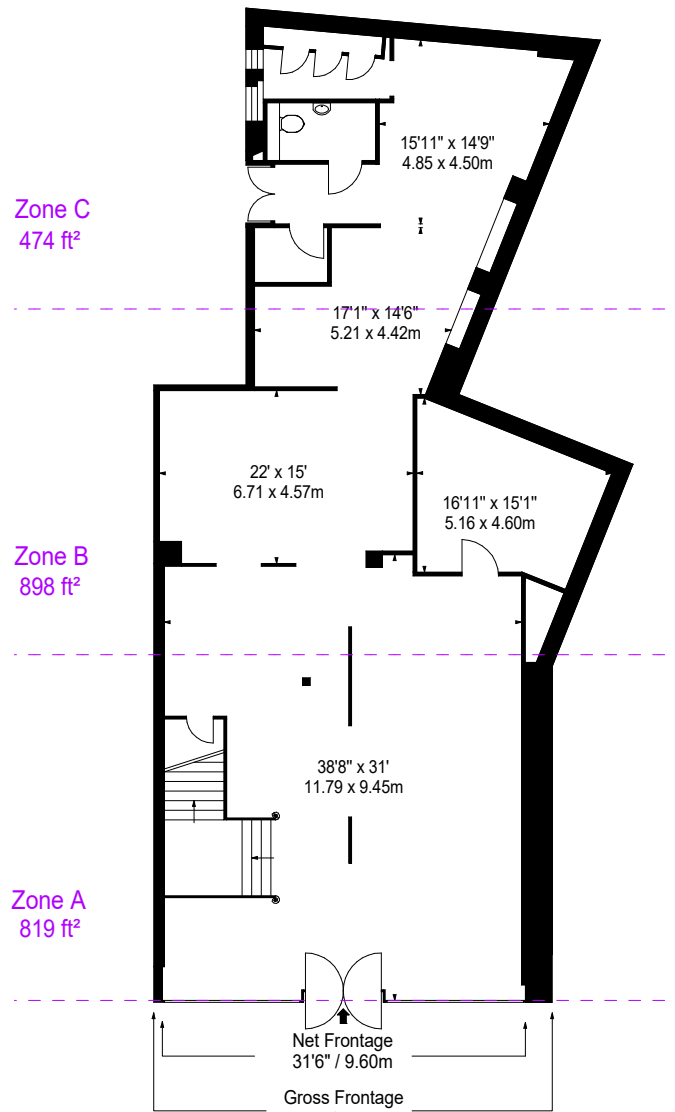
Frontages

	ft	m
Net Frontage	31'6"	9,60
Gross Frontage	34'2"	10,41

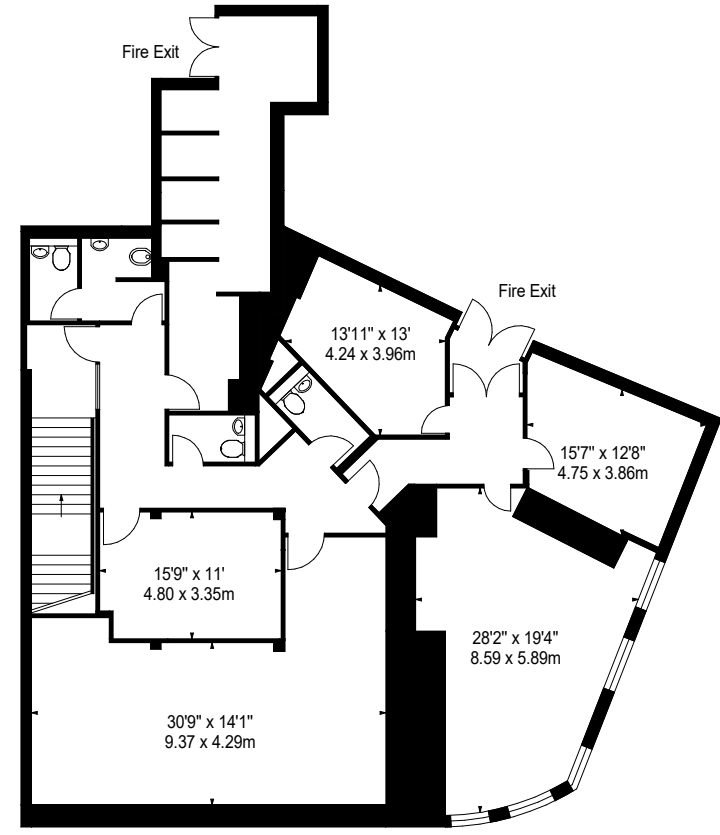


www.bkrfloorplans.co.uk

3-Nov-22



GROUND FLOOR



FIRST FLOOR

APPROX. GROSS INTERNAL AREA *
4925 Ft² - 457.53 M²

APPROX. NET INTERNAL AREA *
4190 Ft² - 389.25 M²

Property Details:	Surveyed and Drawn By:
3 MURRAYGATE DUNDEE DD1 2EE	BKR
SCALE - 1:200 @ A4	Hideaway Work Space 1 Empire Mews London SW16 2BF
REFERENCE NUMBER : 103895	Tel: 0345 257 2023 info@bkrfloorplans.co.uk www.bkrfloorplans.co.uk
Plans Drawn: 03.11.2022	© BKR 2022