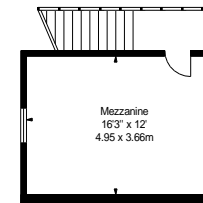




**GROUND FLOOR**



**MEZZANINE**

**APPROX. GROSS INTERNAL AREA \***  
3282 Ft<sup>2</sup> - 304.90 M<sup>2</sup>

**APPROX. NET INTERNAL AREA \***  
0000 Ft<sup>2</sup> - 000.00 M<sup>2</sup>

Property Details: <b>UNIT 53</b> <b>OLD MIXON</b> <b>INDUSTRIAL ESTATE</b> <b>WESTON SUPER MARE</b> <b>BS24 9BA</b>		Surveyed and Drawn By:  <b>Hideaway Work Space</b> 1 Empire Mews London SW16 2BF
<b>SCALE - 1:200 @ A4</b>		Tel: 0345 257 2023 <a href="mailto:info@bkrfloorplans.co.uk">info@bkrfloorplans.co.uk</a> <a href="http://www.bkrfloorplans.co.uk">www.bkrfloorplans.co.uk</a>
<b>REFERENCE NUMBER : 106011</b>		
<b>PLANS DRAWN: 28.06.2024</b>		© BKR 2024



GROUND FLOOR

APPROX. GROSS INTERNAL AREA \*  
73096 Ft<sup>2</sup> - 6,790.62 M<sup>2</sup>

APPROX. NET INTERNAL AREA \*  
0000 Ft<sup>2</sup> - 000.00 M<sup>2</sup>

Property Details:  
**MAIN BUILDING  
OLD MIXON  
INDUSTRIAL ESTATE  
WESTON SUPER MARE  
BS24 9BA**



Surveyed and Drawn By:  
**BKR**  
Hideaway Work Space  
1 Empire Mews  
London  
SW16 2BF

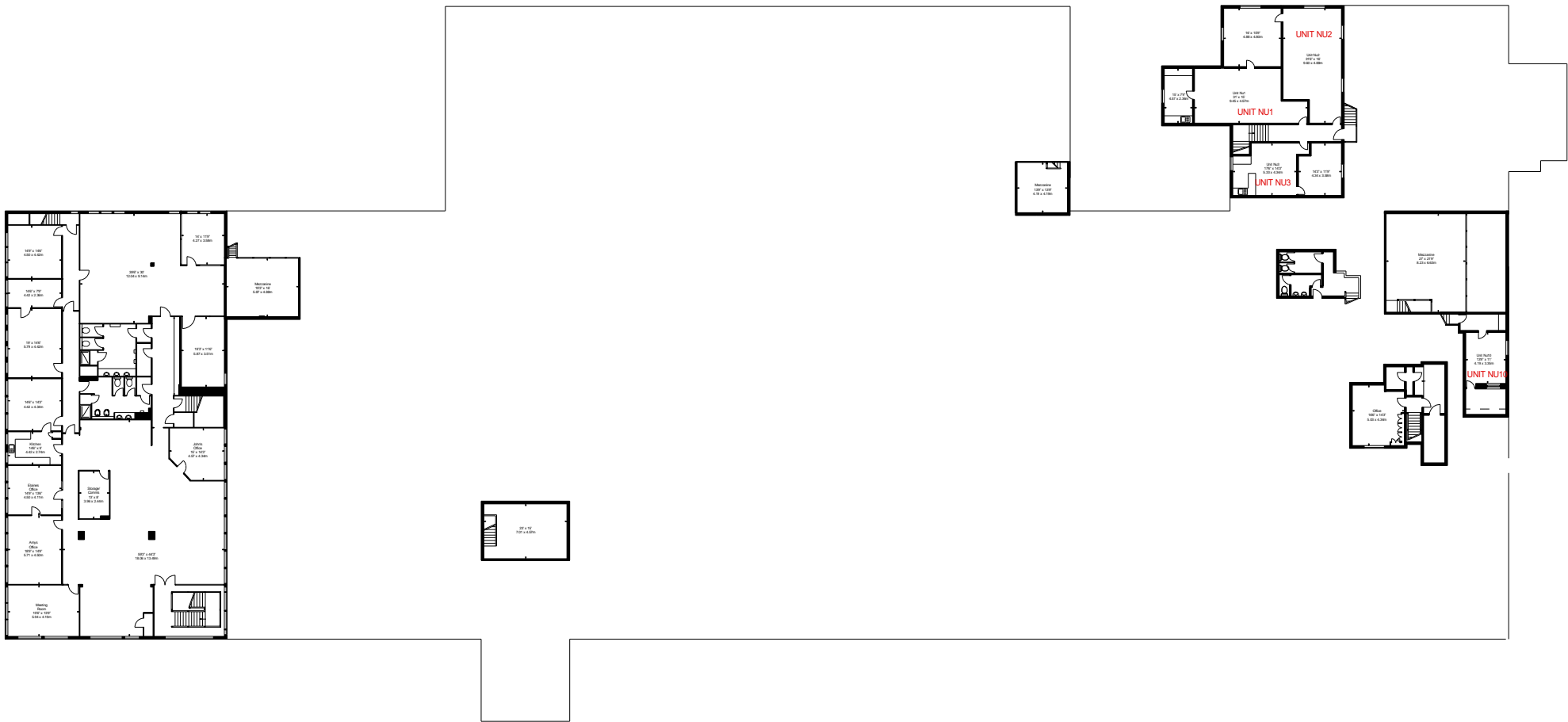
Tel: 0345 257 2023  
info@bkrfloorplans.co.uk  
www.bkrfloorplans.co.uk

© BKR 2024

SCALE - 1:500 @ A4

REFERENCE NUMBER : 106011



PLANS DRAWN: 28.06.2024



FIRST FLOOR

APPROX. GROSS INTERNAL AREA \*  
73096 Ft<sup>2</sup> - 6,790.62 M<sup>2</sup>

APPROX. NET INTERNAL AREA \*  
0000 Ft<sup>2</sup> - 000.00 M<sup>2</sup>

Property Details: <b>MAIN BUILDING</b> <b>OLD MIXON</b> <b>INDUSTRIAL ESTATE</b> <b>WESTON SUPER MARE</b> <b>BS24 9BA</b>		Surveyed and Drawn By:  <b>Hideaway Work Space</b> 1 Empire Mews London SW16 2BF
SCALE - 1:500 @ A4 REFERENCE NUMBER : 106011		Tel: 0345 257 2023 <a href="mailto:info@bkrfloorplans.co.uk">info@bkrfloorplans.co.uk</a> <a href="http://www.bkrfloorplans.co.uk">www.bkrfloorplans.co.uk</a>
PLANS DRAWN: 28.06.2024		© BKR 2024



**GROUND FLOOR**

**APPROX. GROSS INTERNAL AREA \***  
30798 Ft<sup>2</sup> - 2861.13 M<sup>2</sup>

**APPROX. NET INTERNAL AREA \***  
24216 Ft<sup>2</sup> - 2249.67 M<sup>2</sup>

Property Details:  
**CROWN WORKS  
OLD MIXON  
INDUSTRIAL ESTATE  
WESTON SUPER MARE  
BS24 9AX**



Surveyed and Drawn By:



**Hideaway Work Space  
1 Empire Mews  
London  
SW16 2BF**

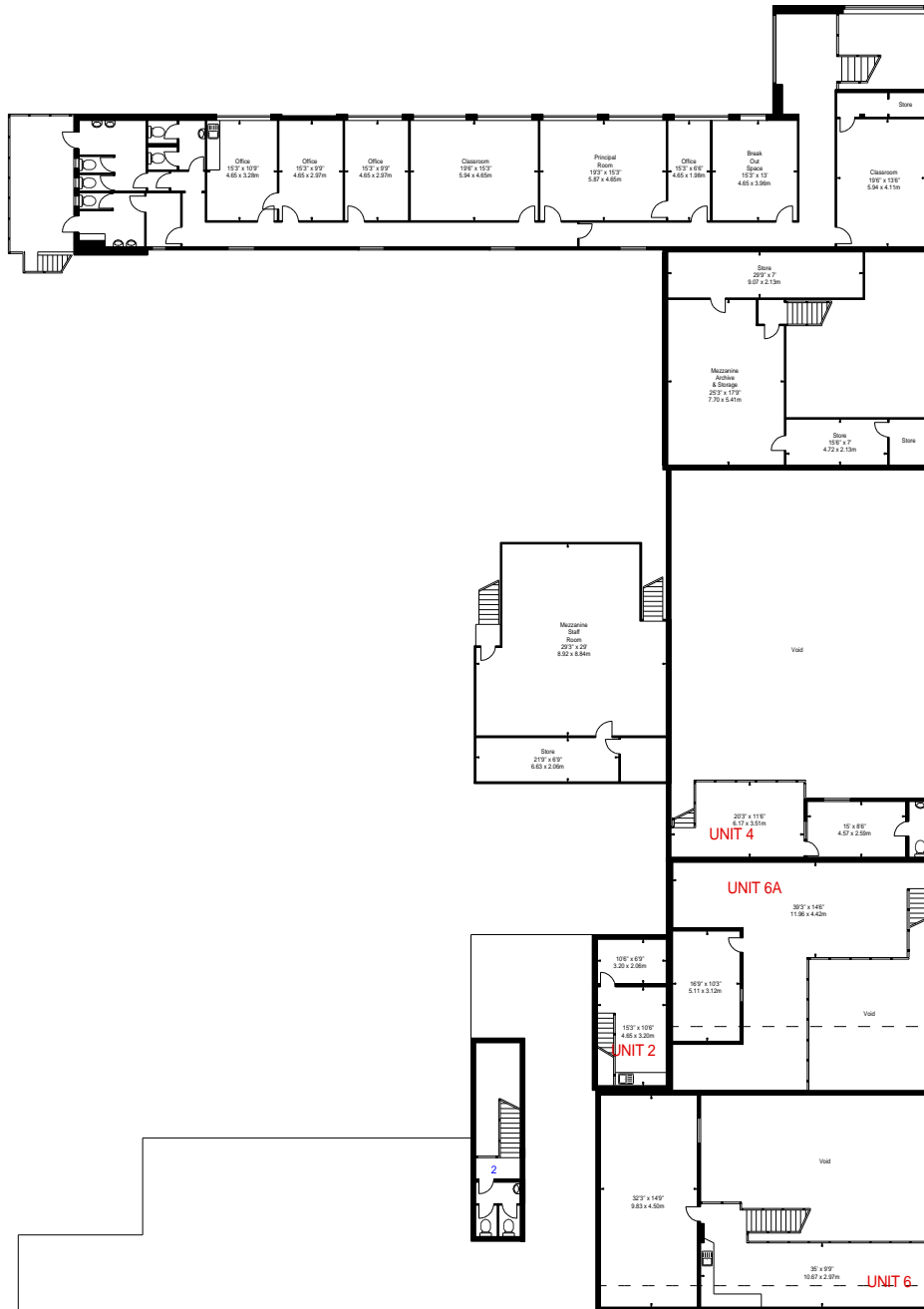
**SCALE - 1:350 @ A4**

**REFERENCE NUMBER : 106011**

**PLANS DRAWN: 28.06.2024**

Tel: 0345 257 2023  
[info@bkrfloorplans.co.uk](mailto:info@bkrfloorplans.co.uk)  
[www.bkrfloorplans.co.uk](http://www.bkrfloorplans.co.uk)

© BKR 2024



FIRST FLOOR

Property Details:  
**CROWN WORKS**  
**OLD MIXON**  
**INDUSTRIAL ESTATE**  
**WESTON SUPER MARE**  
**BS24 9AX**



Surveyed and Drawn By:



Hideaway Work Space  
 1 Empire Mews  
 London  
 SW16 2BF

APPROX. GROSS INTERNAL AREA \*  
 30798 Ft<sup>2</sup> - 2861.13 M<sup>2</sup>

APPROX. NET INTERNAL AREA \*  
 24216 Ft<sup>2</sup> - 2249.67 M<sup>2</sup>

SCALE - 1:350 @ A4

REFERENCE NUMBER : 106011

PLANS DRAWN: 28.06.2024

Tel: 0345 257 2023  
[info@bkrfloorplans.co.uk](mailto:info@bkrfloorplans.co.uk)  
[www.bkrfloorplans.co.uk](http://www.bkrfloorplans.co.uk)

© BKR 2024