

**UNIT 7 GJD JEWELLERS
CANNOCK SHOPPING CENTRE
MARKET PLACE
CANNOCK
WS11 1WS**

Gross Internal Area

	Sq Ft	Sq M
GROUND FLOOR	887	82.40
FIRST FLOOR	1371	127.37
Total	2258	209.77

Net Internal Area

	Sq Ft	Sq M
GROUND FLOOR	810	75.25
FIRST FLOOR	361	33.54
Total	1171	108.79

Zoned Internal Area - Ground Floor

	Sq Ft	Sq M
Zone A	437	40.60
Zone B	373	34.65
Total	810	75.25

Frontages

	ft	m
Net Frontage	0.00	0.00
Gross Frontage	0.00	0.00

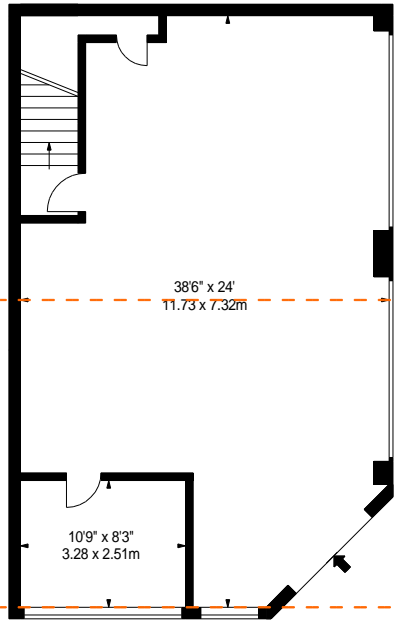


www.bkrfloorplans.co.uk

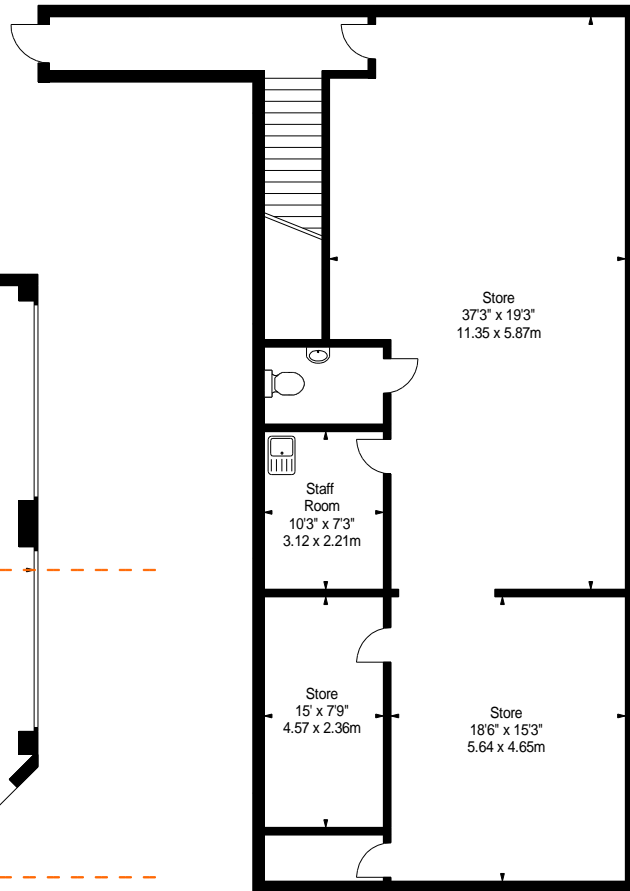
18-Sep-24

Zone B

Zone A



GROUND FLOOR



FIRST FLOOR

APPROX. GROSS INTERNAL AREA *
2258 Ft² - 209.77 M²

Property Details:

**UNIT 7 GJD JEWELLERS
CANNOCK SHOPPING CENTRE
MARKET PLACE
CANNOCK
WS11 1WS**

SCALE - 1:150 @ A4

REFERENCE NUMBER :

Plans Drawn: 18.09.2024

Surveyed and Drawn By:



Hideaway Work Space
1 Empire Mews
London
SW16 2BF

Tel: 0345 257 2023
info@bkrfloorplans.co.uk
www.bkrfloorplans.co.uk

© BKR 2024