

**BUILDING 3
CALLFLEX BUSINESS PARK
ROTHERHAM**

Gross Internal Area - Floor by Floor

	Sq Ft	Sq M
GROUND FLOOR	14099	1,309.80
FIRST FLOOR	14101	1,309.98
Total	28200	2,619.78

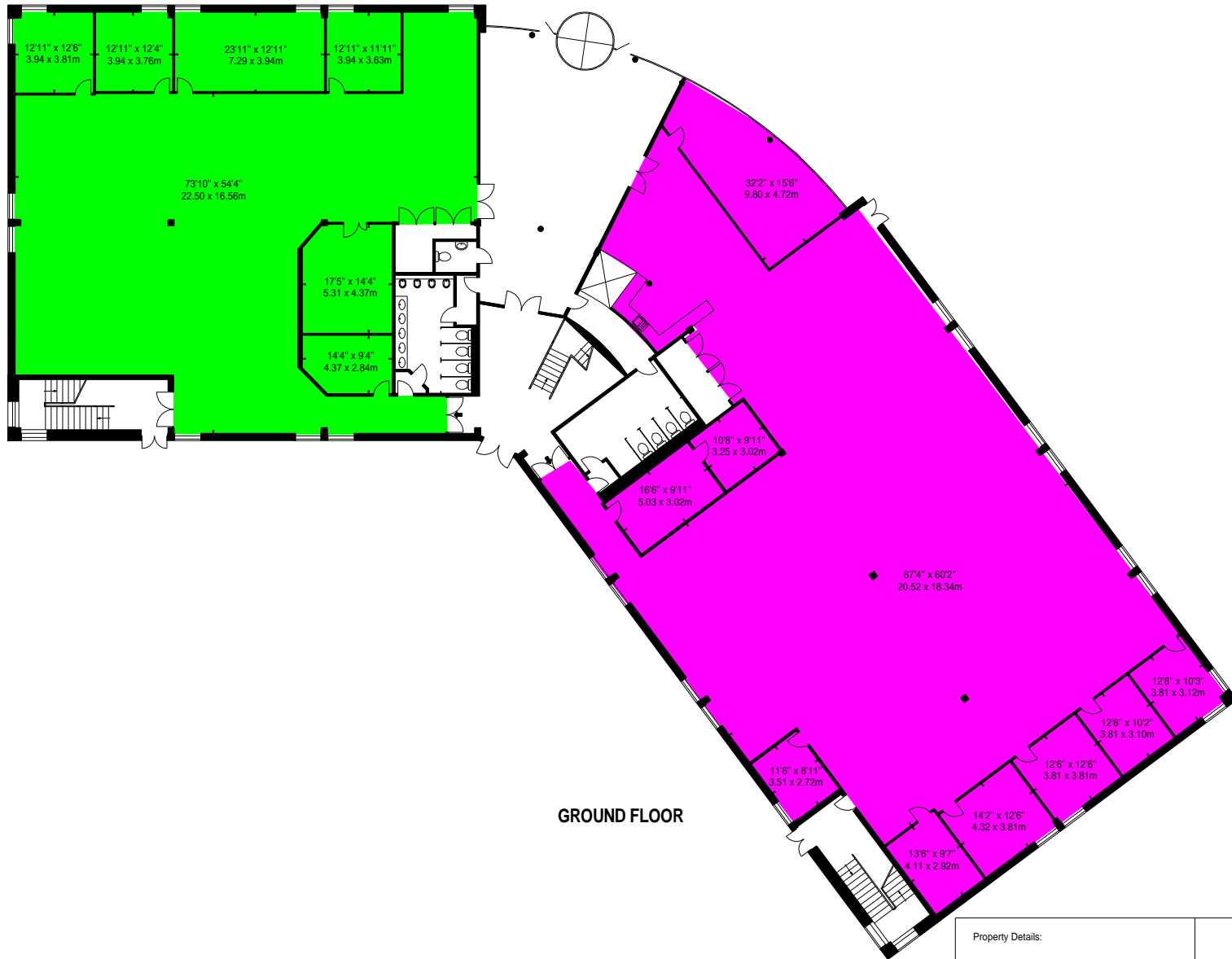
Net Internal Area

	Sq Ft	Sq M
Ground Floor North Wing Unit 3	4339	403.09
Ground Floor South Wing Unit 3	6910	641.94
First Floor Unit 3	12153	1,129.01
Total	23402	2,174.05



www.bkrfloorplans.co.uk

1-Feb-24



GROUND FLOOR

APPROX. GROSS INTERNAL AREA *
28200 Ft² - 2619.86 M²

Property Details:
BUILDING 3
CALLFLEX BUSINESS PARK
ROTHERHAM

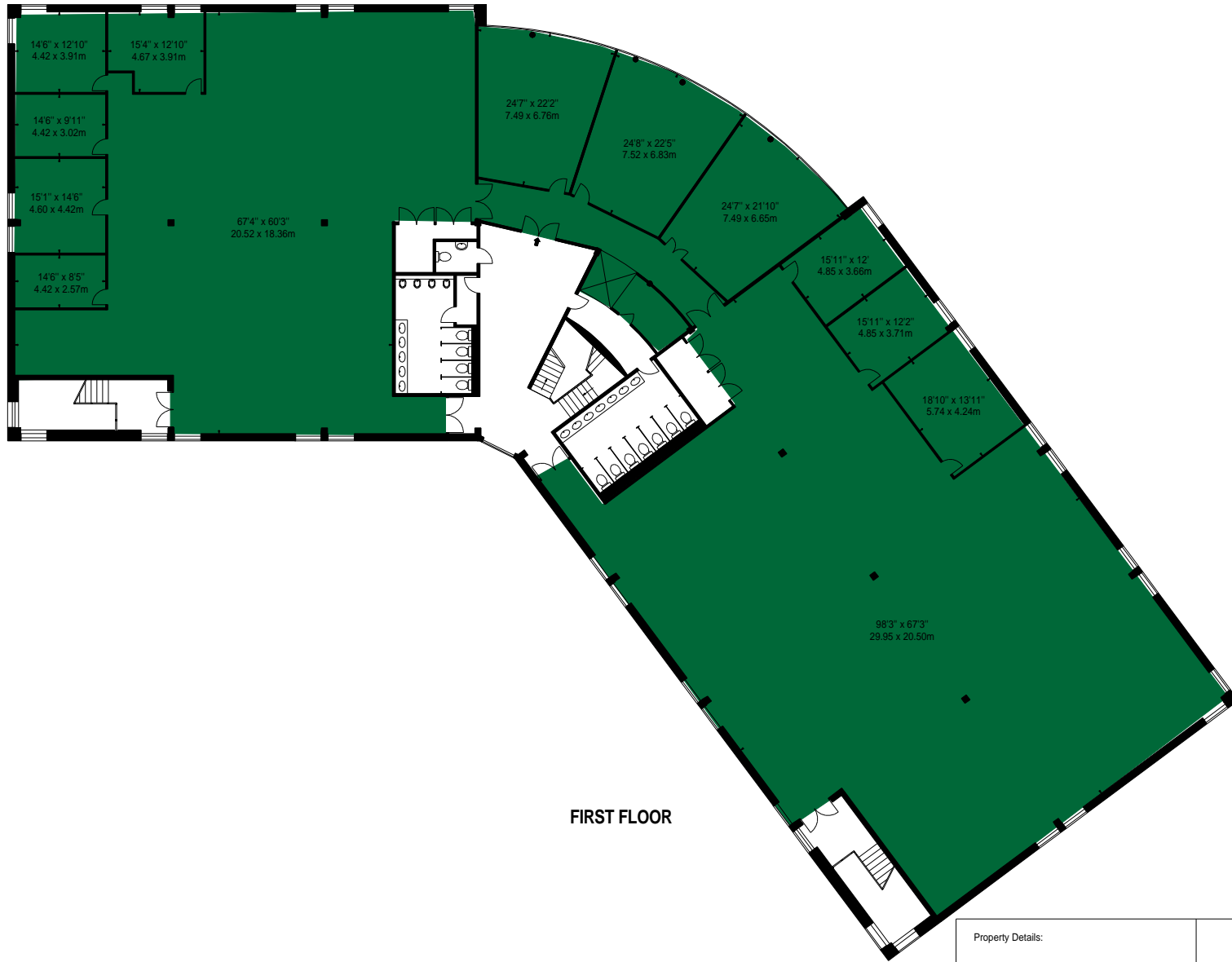


Surveyed and Drawn By:
BKR
Hideaway Work Space
1 Empire Mews
London
SW16 2BF

SCALE - 1:300 @ A4
REFERENCE NUMBER : 105577

Plans Drawn: 30.01.2024

Tel: 0345 257 2023
info@bkrfloorplans.co.uk
www.bkrfloorplans.co.uk
© BKR 2024



FIRST FLOOR

APPROX. GROSS INTERNAL AREA *
28200 Ft² - 2619.86 M²

Property Details:
BUILDING 3
CALLFLEX BUSINESS PARK
ROTHERHAM



Surveyed and Drawn By:
BKR
Hideaway Work Space
1 Empire Mews
London
SW16 2BF

Tel: 0345 257 2023
info@bkrfloorplans.co.uk
www.bkrfloorplans.co.uk

© BKR 2024

SCALE - 1:300 @ A4

REFERENCE NUMBER : 105577

Plans Drawn: 30.01.2024