

**UNIT 25 CARD SHOP
CANNOCK SHOPPING CENTRE
MARKET PLACE
CANNOCK
WS11 1WS**

Gross Internal Area

	Sq Ft	Sq M
GROUND FLOOR	991	92.06
FIRST FLOOR	566	52.58
Total	1557	144.65

Net Internal Area

	Sq Ft	Sq M
GROUND FLOOR	791	73.48
FIRST FLOOR	470	43.66
Total	1261	117.15

Zoned Internal Area - Ground Floor

	Sq Ft	Sq M
Zone A	364	33.82
Zone B	339	31.49
Zone C	88	8.18
Total	791	73.48

Frontages

	ft	m
Net Frontage	17'3"	5.26
Gross Frontage	19'9"	6.02



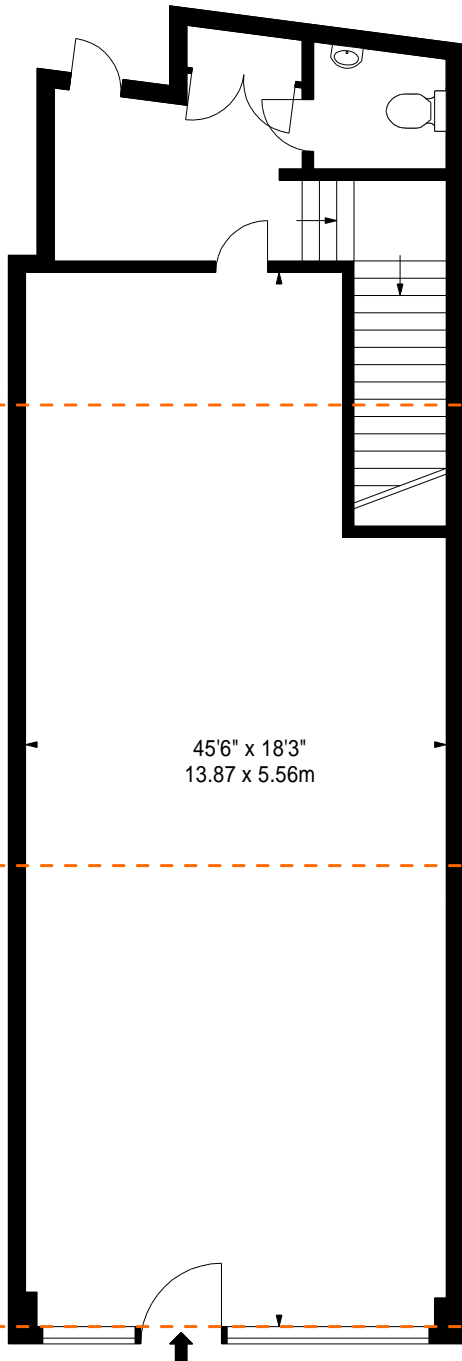
www.bkrfloorplans.co.uk

18-Sep-24

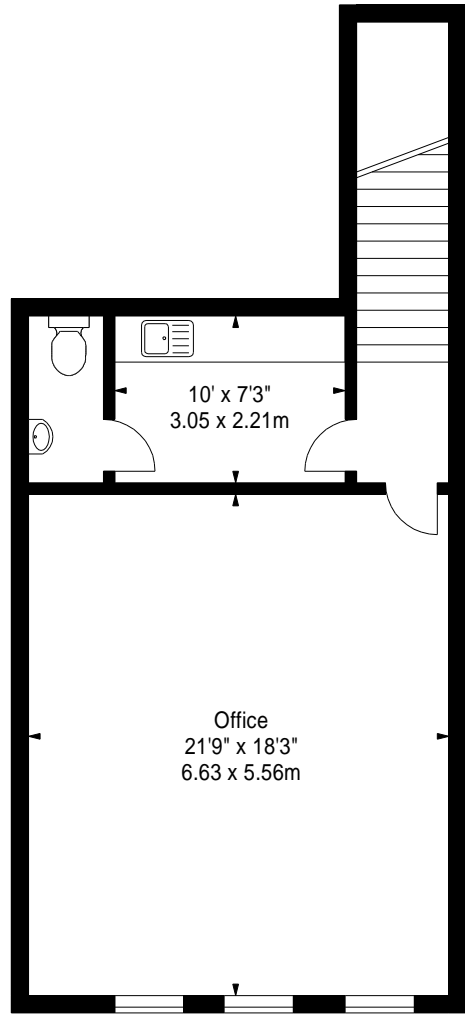
Zone C

Zone B

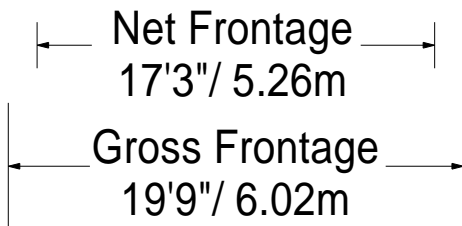
Zone A



GROUND FLOOR



FIRST FLOOR



APPROX. GROSS INTERNAL AREA *
1557 Ft² - 144.65 M²

Property Details:

UNIT 25 CARD SHOP
CANNOCK SHOPPING CENTRE
MARKET PLACE
CANNOCK
WS11 1WS

SCALE - 1:100 @ A4

REFERENCE NUMBER :

Plans Drawn: 18.09.2024

Surveyed and Drawn By:

BKR

Hideaway Work Space
1 Empire Mews
London
SW16 2BF

Tel: 0345 257 2023
info@bkrfloorplans.co.uk
www.bkrfloorplans.co.uk

© BKR 2024