

**BUILDING 2
CALLFLEX BUSINESS PARK
ROTHERHAM**

Gross Internal Area - Floor by Floor

	Sq Ft	Sq M
GROUND FLOOR	19656	1,826.04
FIRST FLOOR	19512	1,812.66
Total	39168	3,638.71

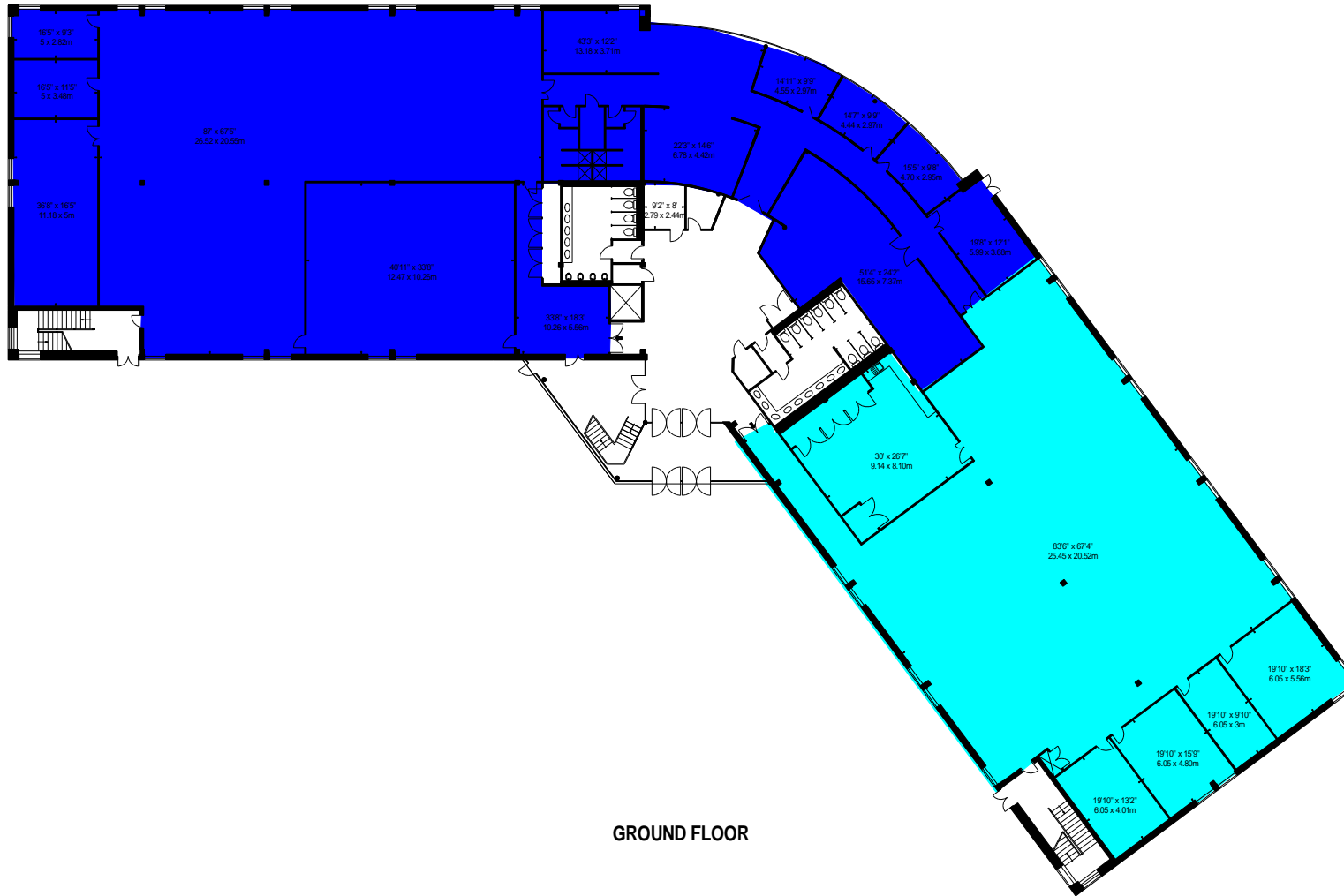
Net Internal Area

	Sq Ft	Sq M
Ground Floor North Wing Unit 2	10338	960.40
Ground Floor South Wing Unit 2	6753	627.35
First Floor North Wing Unit 2	6765	628.47
First Floor South Wing Unit 2	10633	987.81
Total	34489	3,204.03




www.bkrfloorplans.co.uk

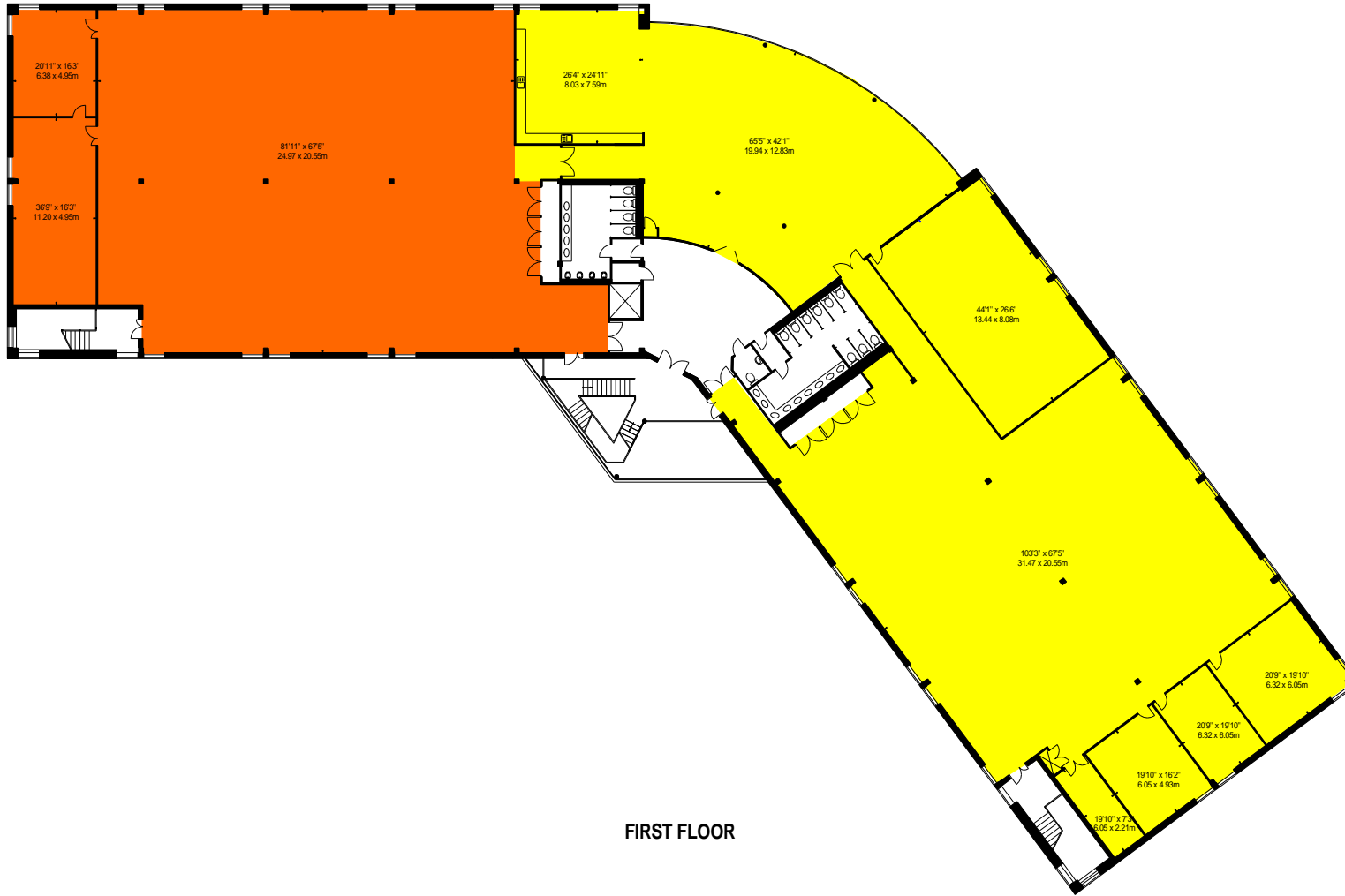
1-Feb-24



GROUND FLOOR


APPROX. GROSS INTERNAL AREA *
39168 Ft² - 3638.82 M²

<p>Property Details:</p> <p>BUILDING 2 CALLFLEX BUSINESS PARK ROTHERHAM</p>		<p>Surveyed and Drawn By:</p> <p>BKR</p> <p>Hideaway Work Space 1 Empire Mews London SW16 2BF</p>
<p>SCALE - 1:400 @ A4</p>		<p>Tel: 0345 257 2023 info@bkrfloorplans.co.uk www.bkrfloorplans.co.uk</p>
<p>REFERENCE NUMBER : 105577</p>		<p>© BKR 2024</p>
<p>Plans Drawn: 29.01.2024</p>		



FIRST FLOOR

APPROX. GROSS INTERNAL AREA *
39168 Ft² - 3638.82 M²

<p>Property Details:</p> <p>BUILDING 2 CALLFLEX BUSINESS PARK ROTHERHAM</p>		<p>Surveyed and Drawn By:</p> <p>BKR</p> <p>Hideaway Work Space 1 Empire Mews London SW16 2BF</p>
<p>SCALE - 1:400 @ A4</p>		<p>Tel: 0345 257 2023 info@bkrfloorplans.co.uk www.bkrfloorplans.co.uk</p>
<p>REFERENCE NUMBER : 105577</p>		<p>© BKR 2024</p>
<p>Plans Drawn: 29.01.2024</p>		