

## 39 BROAD WALK HARLOW

### Gross Internal Area

	Sq Ft	Sq M
GROUND FLOOR	18286	1,698.77
FIRST FLOOR	9446	877.53
<b>Total</b>	<b>27732</b>	<b>2,576.30</b>

### Net Internal Area

	Sq Ft	Sq M
GROUND FLOOR	17172	1,595.28
FIRST FLOOR	7777	722.48
<b>Total</b>	<b>24949</b>	<b>2,317.76</b>

### Zoned Internal Area - Ground Floor

	Sq Ft	Sq M
Zone A	1465	136.10
Zone B	1914	177.81
Zone C	2327	216.18
Remainder	11466	1,065.19
<b>Total</b>	<b>17172</b>	<b>1,595.28</b>

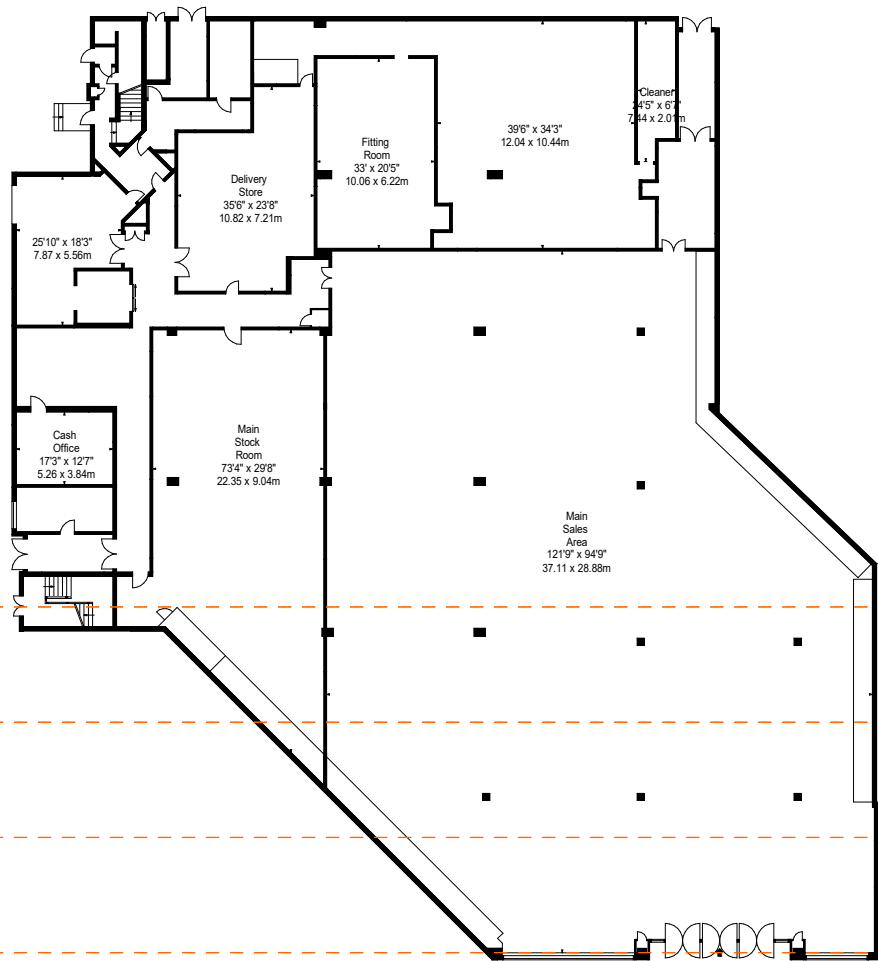
### Frontages

	ft	m
Net Frontage	64'7"	19.68
Gross Frontage	66'9"	20.35

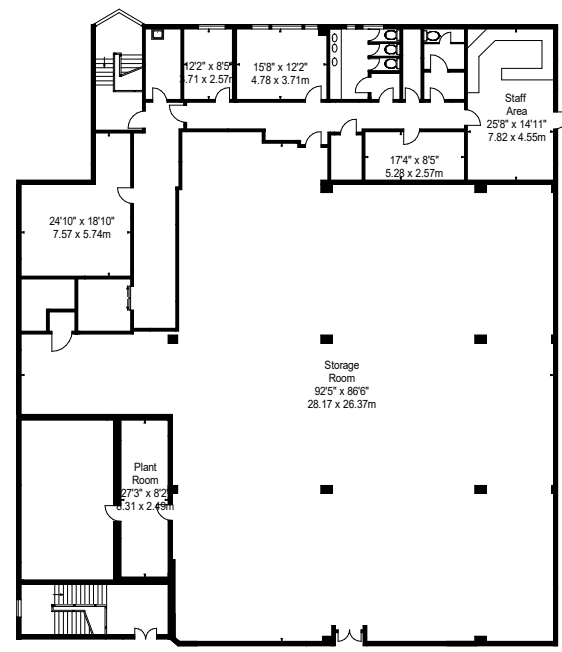
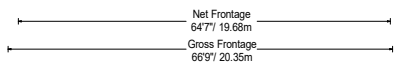


[www.bkrfloorplans.co.uk](http://www.bkrfloorplans.co.uk)

20-Apr-24



**GROUND FLOOR**



**FIRST FLOOR**

11466 ft<sup>2</sup>  
Remainder

2327 ft<sup>2</sup>  
Zone C

1914 ft<sup>2</sup>  
Zone B

1465 ft<sup>2</sup>  
Zone A

APPROX. GROSS INTERNAL AREA \*  
27732 Ft<sup>2</sup> - 2576.30 M<sup>2</sup>

APPROX. NET INTERNAL AREA \*  
24949 Ft<sup>2</sup> - 2317.76 M<sup>2</sup>


Property Details:  
**39 BROADWALK  
HARLOW  
ESSEX  
CM20 1JF**

**SCALE - 1:400 @ A4**

**REFERENCE NUMBER :108061**

**Plans Drawn: 20.04.2026**

Surveyed and Drawn By:



Hideaway Work Space  
1 Empire Mews  
London  
SW16 2BF

Tel: 0345 257 2023  
info@bkrfloorplans.co.uk  
www.bkrfloorplans.co.uk

© BKR 2026

