

**233-235 HIGH STREET
BANGOR
WALES**

Gross Internal Area Whole Building

	Sq Ft	Sq M
LOWER GROUND FLOOR	1202	111.67
GROUND FLOOR	1495	138.89
GROUND FLOOR HALF LANDING	101	9.38
FIRST FLOOR	1432	133.03
FIRST FLOOR HALF LANDING	176	16.35
SECOND FLOOR	1432	133.03
Total	5838	542.35

Net Internal Area Shop

	Sq Ft	Sq M
LOWER GROUND FLOOR	984	91.41
GROUND FLOOR	1259	116.96
Total	2243	208.37

Zoned Internal Area - Ground Floor

	Sq Ft	Sq M
Zone A	522	48.49
Zone B	456	42.36
Zone C	281	26.10
Total	1259	116.96

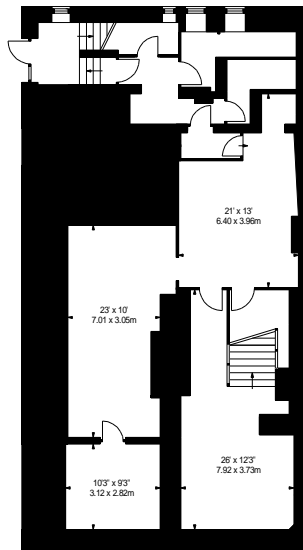
Gross Internal Flats Area

1	265	24.62
2	246	22.85
3	273	25.36
4	272	25.27
5	265	24.62
6	246	22.85
7	273	25.36
8	261	24.25
Total	2101	195.18

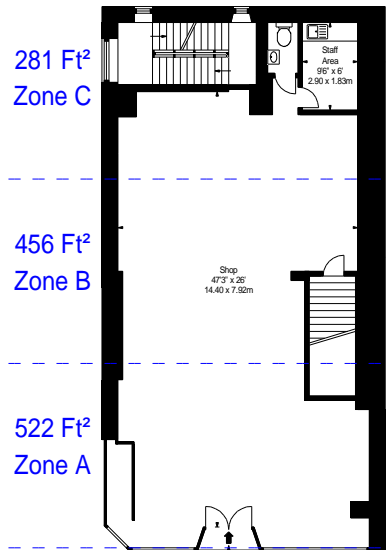
Frontages

	ft	m
Net Frontage	28'6"	8.69
Gross Frontage	30'6"	9.29





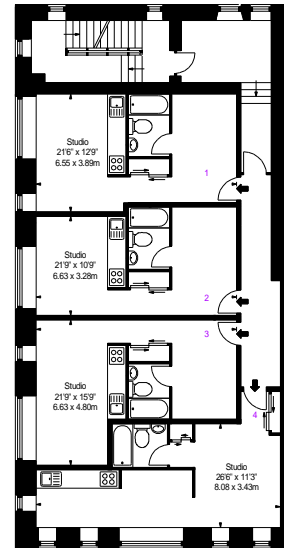
LOWER GROUND FLOOR



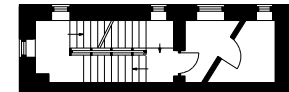
GROUND FLOOR



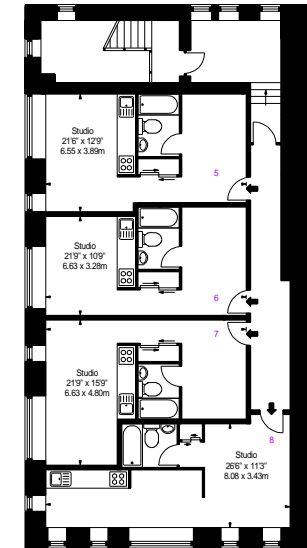
GROUND FLOOR
HALF LANDING



FIRST FLOOR



FIRST FLOOR
HALF LANDING



SECOND FLOOR

APPROX. GROSS INTERNAL AREA *
5838 Ft² - 542.35 M²
(Whole Building)

Property Details:	Surveyed and Drawn By:
233-235 HIGH STREET BANGOR WALES	BKR Hideaway Work Space 1 Empire Mews London SW16 2BF
SCALE - 1:250 @ A4	Tel: 0345 257 2023 info@bkrfloorplans.co.uk www.bkrfloorplans.co.uk
REFERENCE NUMBER : 106403	Plans Drawn: 09.10.2024
Plans Drawn: 09.10.2024	© BKR 2024