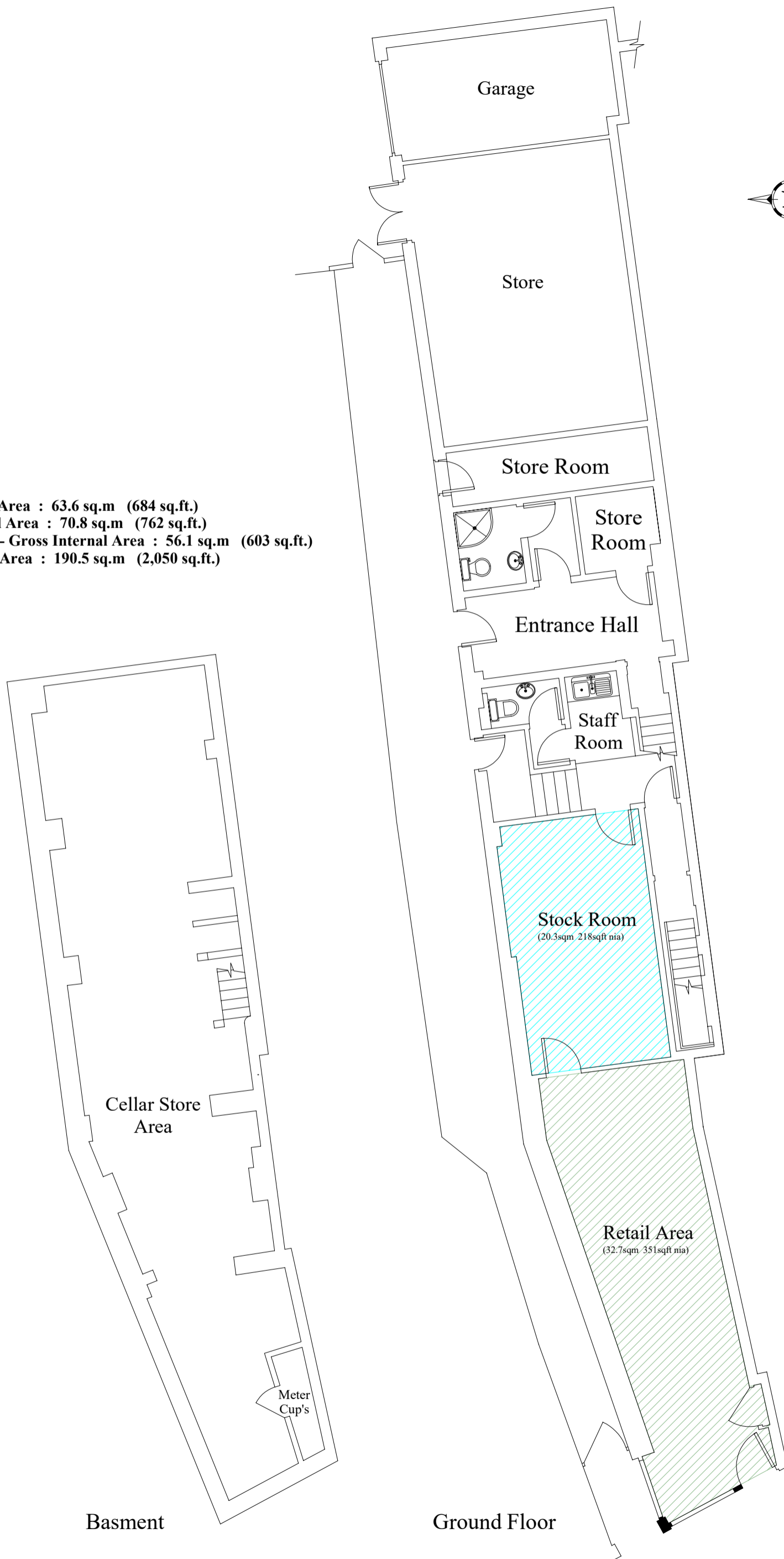


Shop - Net Internal Area : 63.6 sq.m (684 sq.ft.)
Cellar - Net Internal Area : 70.8 sq.m (762 sq.ft.)
Garage / Stores Net - Gross Internal Area : 56.1 sq.m (603 sq.ft.)
Total - Net Internal Area : 190.5 sq.m (2,050 sq.ft.)



Basment

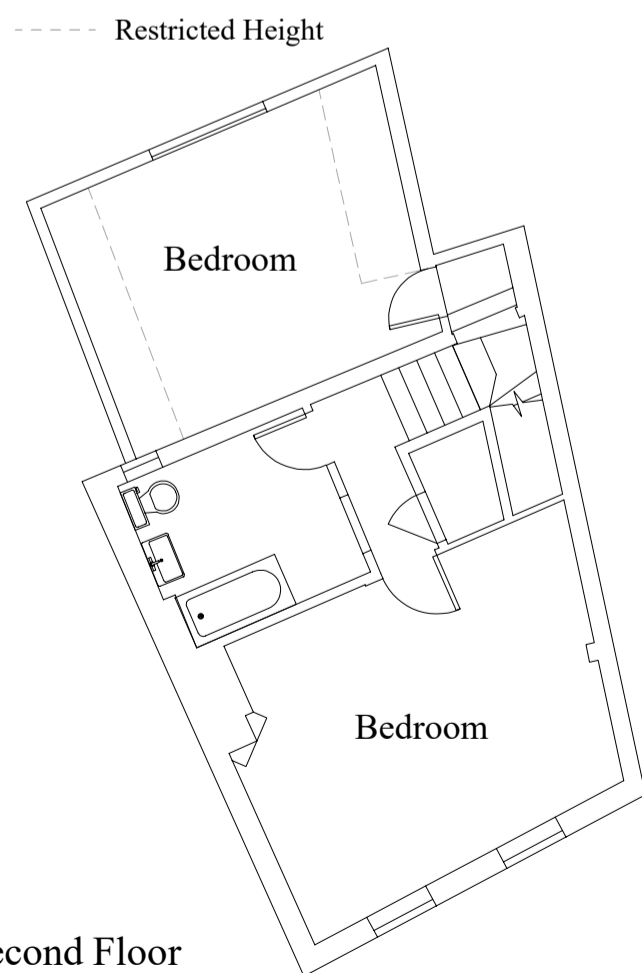
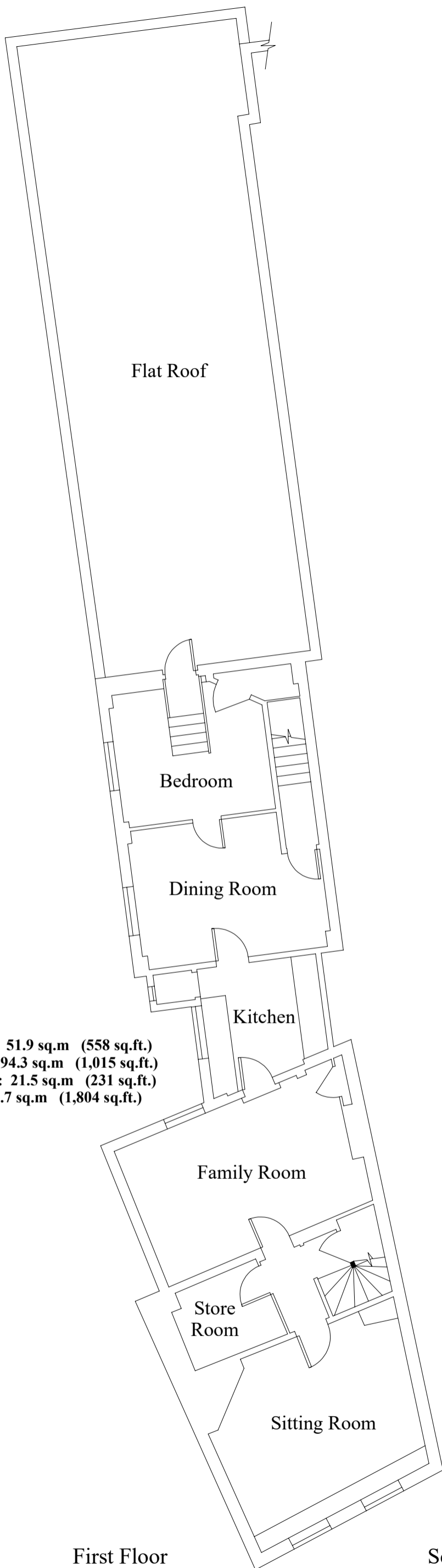
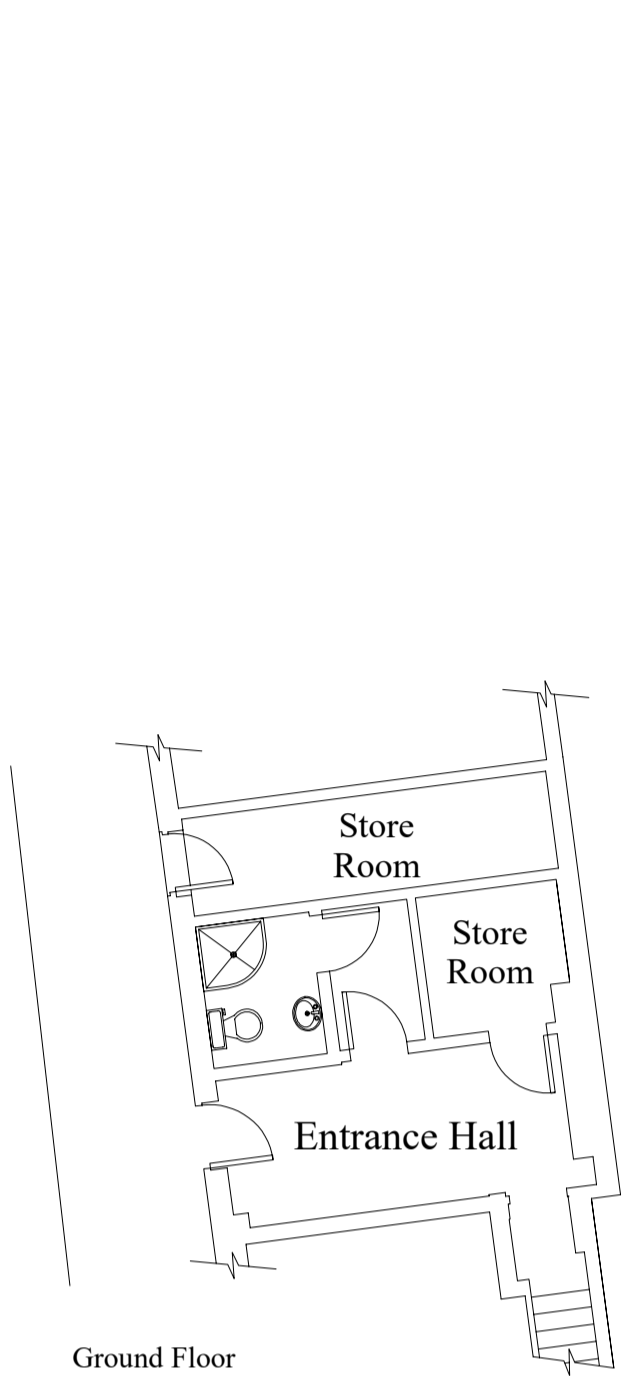
Ground Floor



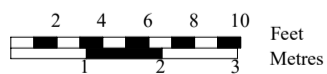
Trueplan (UK) Ltd,
 Bank Chambers, 36 Mount Pleasant Road,
 Tunbridge Wells, Kent TN1 1RB
 01892 614 881
 plans@trueplan.co.uk www.trueplan.co.uk

22 Week Street
 Maidstone
 Kent
 ME14 1RH

Scale 1:100 @A3
 Drawing no.: 56304a
 Date drawn: 10/05/2024
 Revision: 01



Maisonette 2nd Floor - Gross Internal Area : 51.9 sq.m (558 sq.ft.)
Maisonette 1st Floor - Gross Internal Area : 94.3 sq.m (1,015 sq.ft.)
Maisonette Gnd Floor - Gross Internal Area : 21.5 sq.m (231 sq.ft.)
Maisonette Total - Gross Internal Area : 167.7 sq.m (1,804 sq.ft.)
(Excluding External Store Room)



Trueplan (UK) Ltd,
 Bank Chambers, 36 Mount Pleasant Road,
 Tunbridge Wells, Kent TN1 1RB
 01892 614 881
 plans@trueplan.co.uk www.trueplan.co.uk

22 Week Street
 Maidstone
 Kent
 ME14 1RH

Scale 1:100 @A3
 Drawing no.: 56304b
 Date drawn: 10/05/2024
 Revision: 01