

**GREGGS  
CASTLE WALK  
NEWCASTLE UNDER LYME  
ST5 1AN**

**Gross Internal Area**

	<b>Sq Ft</b>	<b>Sq M</b>
GROUND FLOOR	1762	163.69
FIRST FLOOR	1106	102.75
<b>Total</b>	<b>2868</b>	<b>266.44</b>

**Net Internal Area**

	<b>Sq Ft</b>	<b>Sq M</b>
GROUND FLOOR	1586	147.34
FIRST FLOOR	965	89.65
<b>Total</b>	<b>2551</b>	<b>236.99</b>

**Zoned Internal Area - Ground Floor**

	<b>Sq Ft</b>	<b>Sq M</b>
Zone A	458	42.55
Zone B	434	40.32
Zone C	361	33.54
Remainder	333	30.94
<b>Total</b>	<b>1586</b>	<b>147.34</b>

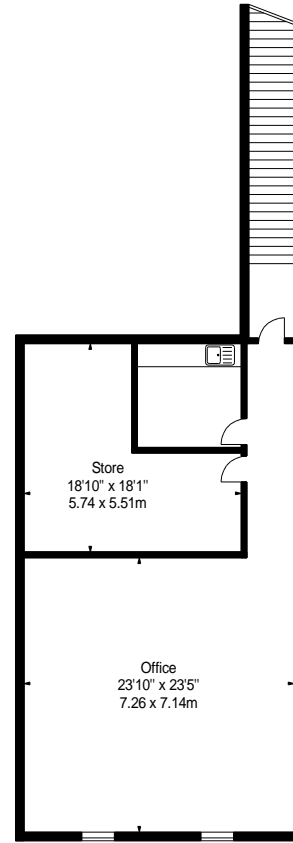
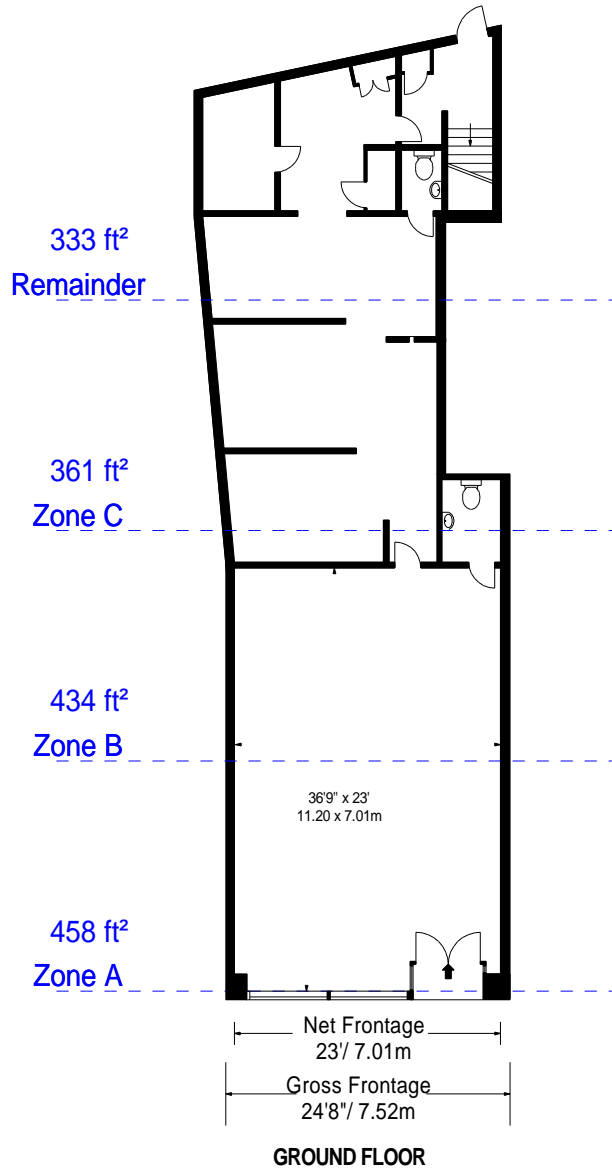
**Frontages**

	<b>ft</b>	<b>m</b>
Net Frontage	23'	7.01
Gross Frontage	24'8"	7.52



[www.bkrfloorplans.co.uk](http://www.bkrfloorplans.co.uk)

20-Aug-24



**FIRST FLOOR**

**APPROX. GROSS INTERNAL AREA \***  
2868 Ft<sup>2</sup> - 266.44 M<sup>2</sup>

**APPROX. NET INTERNAL AREA \***  
2551 Ft<sup>2</sup> - 236.99 M<sup>2</sup>

Property Details:

**GREGGS  
CASTLE WALK  
NEWCASTLE UNDER LYME  
ST5 1AN**

**SCALE - 1:200 @ A4**

**REFERENCE NUMBER :106205**

**Plans Drawn: 20.08.2024**

Surveyed and Drawn By:



Hideaway Work Space  
1 Empire Mews  
London  
SW16 2BF

Tel: 0345 257 2023  
info@bkrfloorplans.co.uk  
www.bkrfloorplans.co.uk

© BKR 2024