

**UNIT 1 - 45 LIVE  
4 - 5 OXFORD STREET  
KIDDERMINSTER  
DY10 1BB**

**Net Internal Area**

	<b>Sq Ft</b>	<b>Sq M</b>
GROUND FLOOR	4507	418,70
<b>Total</b>	<b>4507</b>	<b>418,70</b>

**Zoned Internal Area - Ground Floor**

	<b>Sq Ft</b>	<b>Sq M</b>
Zone A	691	64,19
Zone B	934	86,77
Zone C	1209	112,32
Remainder	1673	155,42
<b>Total</b>	<b>4507</b>	<b>418,70</b>

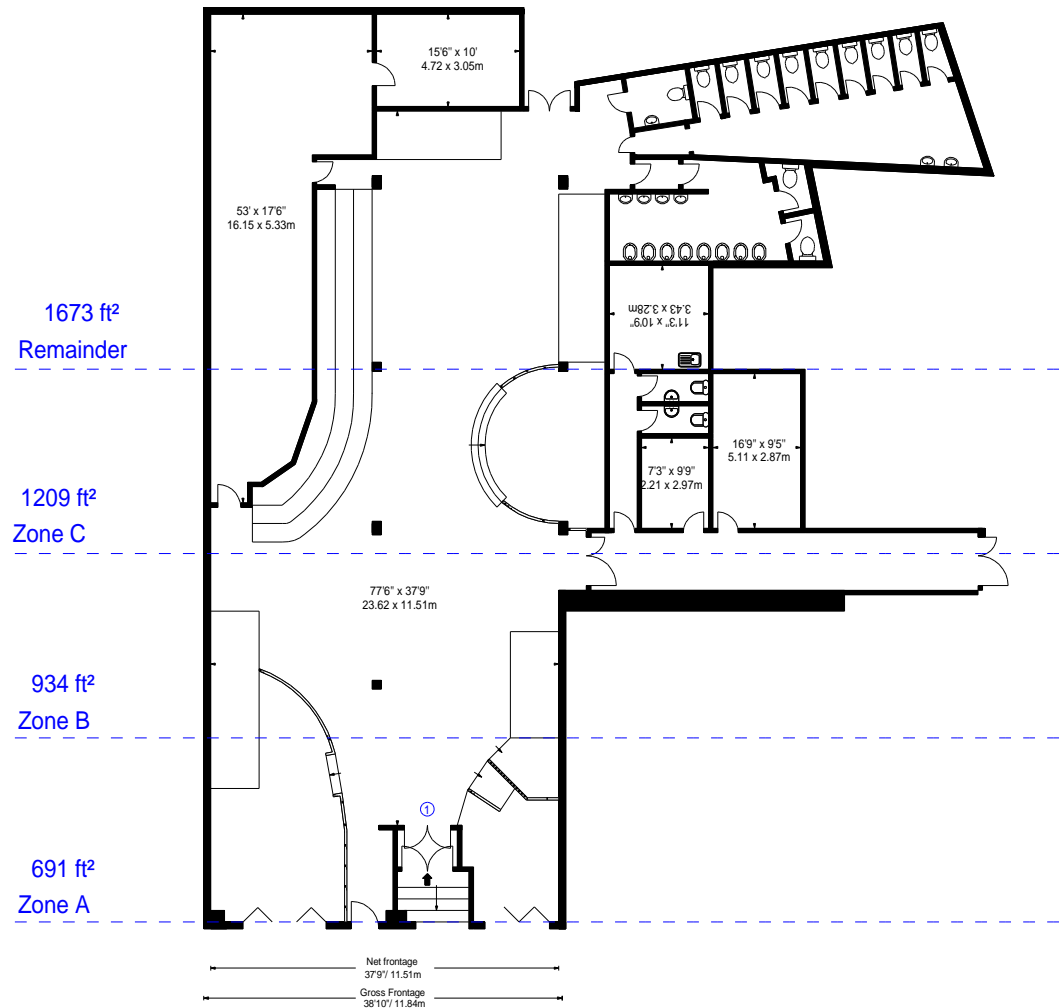
**Frontages**

	<b>ft</b>	<b>m</b>
Net Frontage	37'9"	11,51
Gross Frontage	38'10"	11,84




[www.bkrfloorplans.co.uk](http://www.bkrfloorplans.co.uk)

15-Dec-22



**GROUND FLOOR**

**APPROX. NET INTERNAL AREA \***  
4507 Ft<sup>2</sup> - 418.70 M<sup>2</sup>

<p>Property Details:</p> <p><b>UNIT 1 - 45 LIVE</b> <b>4 - 5 OXFORD STREET</b> <b>KIDDERMINSTER</b> <b>DY10 1BB</b></p>		<p>Surveyed and Drawn By:</p> <p><b>BKR</b></p> <p>Hideaway Work Space 1 Empire Mews London SW16 2BF</p>
<p><b>SCALE - 1:250 @ A4</b></p>		<p>Tel: 0345 257 2023</p>
<p><b>REFERENCE NUMBER : 103995</b></p>		<p><a href="mailto:info@bkrfloorplans.co.uk">info@bkrfloorplans.co.uk</a> <a href="http://www.bkrfloorplans.co.uk">www.bkrfloorplans.co.uk</a></p>
<p><b>Plans Drawn: 15.12.2022</b></p>		<p>© BKR 2022</p>

**UNIT 2 - PEACOCKS  
64-65 WORCESTER STREET  
KIDDERMINSTER  
DY10 1EL /1BB**

Net Internal Area

	Sq Ft	Sq M
GROUND FLOOR	4124	383,12
FIRST FLOOR	1200	111,48
<b>Total</b>	<b>5324</b>	<b>494,60</b>

Zoned Internal Area - Ground Floor

	Sq Ft	Sq M
Zone A	669	62,15
Zone B	693	64,38
Zone C	759	70,51
Remainder	2003	186,08
<b>Total</b>	<b>4124</b>	<b>383,12</b>

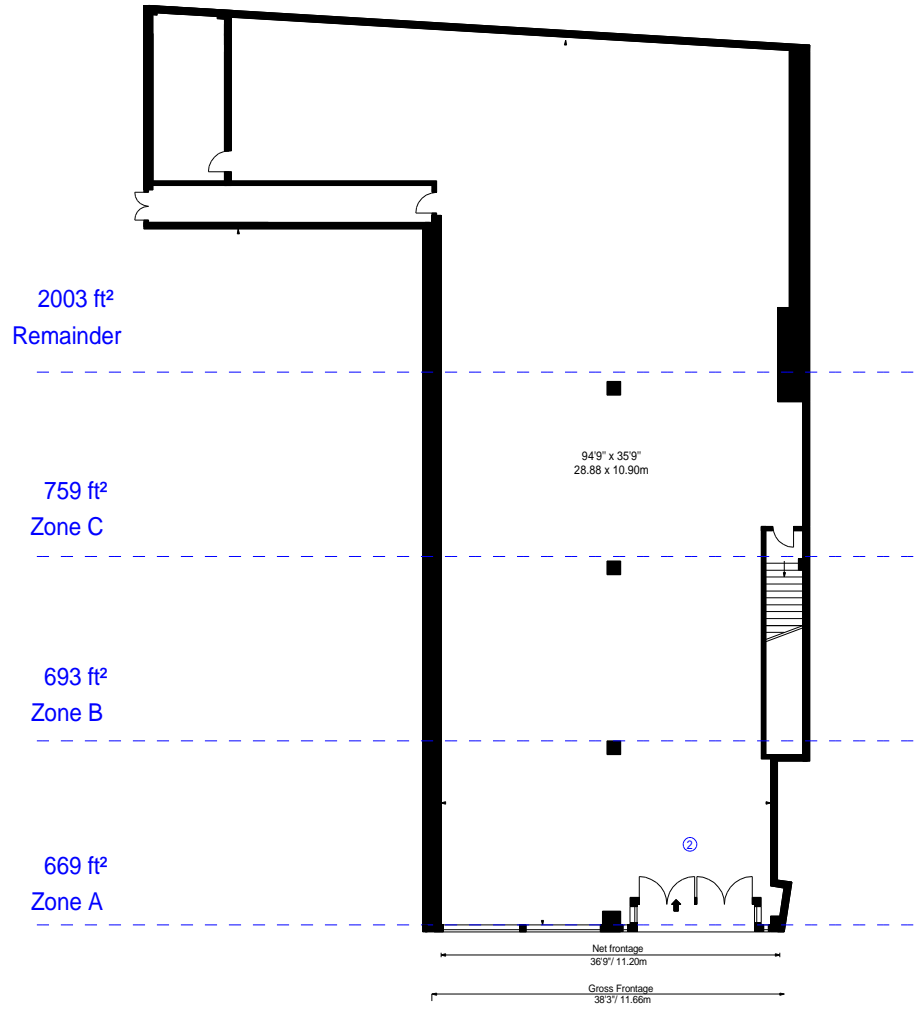
Frontages

	ft	m
Net Frontage	36'9"	11,20
Gross Frontage	38'3"	11,66

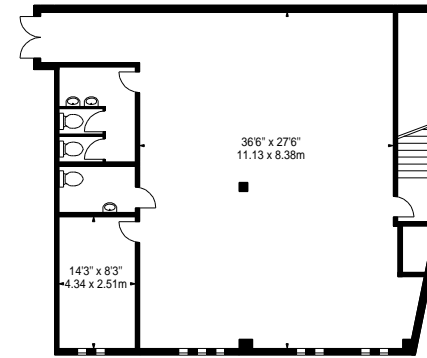


[www.bkrfloorplans.co.uk](http://www.bkrfloorplans.co.uk)

15-Dec-22





GROUND FLOOR



FIRST FLOOR

APPROX. NET INTERNAL AREA \*  
5324 Ft<sup>2</sup> - 494.60 M<sup>2</sup>

Property Details:  <b>UNIT 2 - PEACOCKS</b> <b>64-65 WORCESTER STREET</b> <b>KIDDERMINSTER</b> <b>DY10 1EL /1BB</b>		Surveyed and Drawn By:  Hideaway Work Space 1 Empire Mews London SW16 2BF
<b>SCALE - 1:250 @ A4</b>		
<b>REFERENCE NUMBER : 103995</b>		
<b>Plans Drawn: 15.12.2022</b>		
		Tel: 0345 257 2023 <a href="mailto:info@bkrfloorplans.co.uk">info@bkrfloorplans.co.uk</a> <a href="http://www.bkrfloorplans.co.uk">www.bkrfloorplans.co.uk</a> © BKR 2022

**UNIT 3 - FORCES SUPPORT  
62-63 WORCESTER STREET  
KIDDERMINSTER  
DY10 1EL**

Net Internal Area

	Sq Ft	Sq M
GROUND FLOOR	4405	409,22
FIRST FLOOR	1655	153,75
<b>Total</b>	<b>6060</b>	<b>562,97</b>

Zoned Internal Area - Ground Floor

	Sq Ft	Sq M
Zone A	1057	98,20
Zone B	1094	101,63
Zone C	1178	109,44
Remainder	1076	99,96
<b>Total</b>	<b>4405</b>	<b>409,22</b>

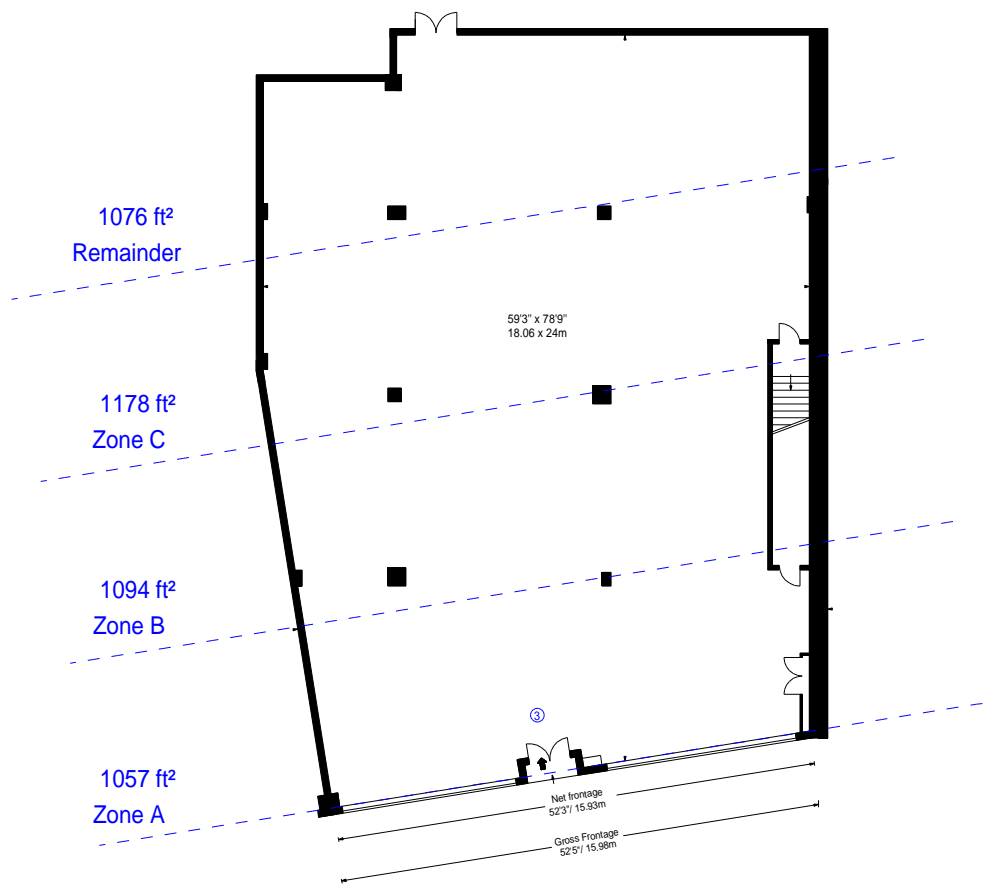
Frontages

	ft	m
Net Frontage	52'3"	15,93
Gross Frontage	52'5"	15,98

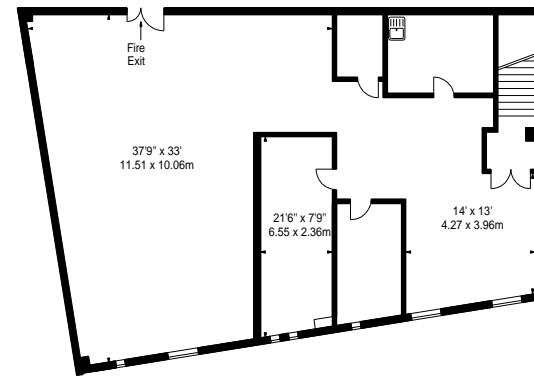


[www.bkrfloorplans.co.uk](http://www.bkrfloorplans.co.uk)

15-Dec-22





GROUND FLOOR



FIRST FLOOR

APPROX. NET INTERNAL AREA \*  
6060 Ft<sup>2</sup> - 562.97 M<sup>2</sup>

Property Details:		Surveyed and Drawn By:
<b>UNIT 3 - FORCES SUPPORT</b> <b>62-63 WORCESTER STREET</b> <b>KIDDERMINSTER</b> <b>DY10 1EL</b>		 Hideaway Work Space 1 Empire Mews London SW16 2BF
SCALE - 1:250 @ A4		Tel: 0345 257 2023
REFERENCE NUMBER : 103995		<a href="mailto:info@bkrfloorplans.co.uk">info@bkrfloorplans.co.uk</a> <a href="http://www.bkrfloorplans.co.uk">www.bkrfloorplans.co.uk</a>
Plans Drawn: 15.12.2022		© BKR 2022

**UNIT 4 - REGENERATE LTD  
58-59 WORCESTER STREET  
KIDDERMINSTER  
DY10 1EL**

Net Internal Area

	<b>Sq Ft</b>	<b>Sq M</b>
GROUND FLOOR	1679	155,98
FIRST FLOOR	1622	150,68
<b>Total</b>	<b>3301</b>	<b>306,66</b>

Zoned Internal Area - Ground Floor

	<b>Sq Ft</b>	<b>Sq M</b>
Zone A	715	66,42
Zone B	711	66,05
Zone C	253	23,50
<b>Total</b>	<b>1679</b>	<b>155,98</b>

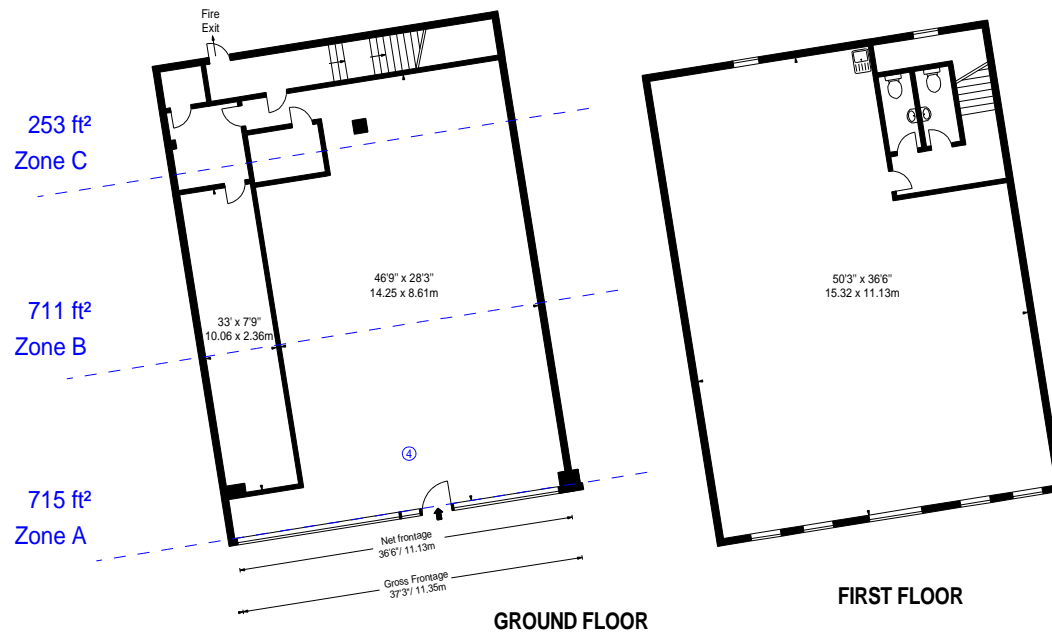
Frontages

	ft	m
Net Frontage	36'6"	11,13
Gross Frontage	37'3"	11,35




[www.bkrfloorplans.co.uk](http://www.bkrfloorplans.co.uk)

15-Dec-22



APPROX. NET INTERNAL AREA \*  
3301 Ft<sup>2</sup> - 306.66 M<sup>2</sup>

<p>Property Details:</p> <p><b>UNIT 4 - REGENERATE LTD</b>  <b>58-59 WORCESTER STREET</b>  <b>KIDDERMINSTER</b>  <b>DY10 1EL</b></p>		<p>Surveyed and Drawn By:</p> <p><b>BKR</b></p> <p>Hideaway Work Space          1 Empire Mews          London          SW16 2BF</p>
<p><b>SCALE - 1:250 @ A4</b></p>		<p>Tel: 0345 257 2023  <a href="mailto:info@bkrfloorplans.co.uk">info@bkrfloorplans.co.uk</a>  <a href="http://www.bkrfloorplans.co.uk">www.bkrfloorplans.co.uk</a></p>
<p><b>REFERENCE NUMBER : 103995</b></p>		<p><a href="http://www.bkrfloorplans.co.uk">www.bkrfloorplans.co.uk</a></p>
<p><b>Plans Drawn: 15.12.2022</b></p>		<p>© BKR 2022</p>



**UNIT 5 - VACANT**  
**55 - 57 WORCESTER STREET**  
**KIDDERMINSTER**  
**DY10 1E**

Net Internal Area

	<b>Sq Ft</b>	<b>Sq M</b>
GROUND FLOOR	3122	290,03
FIRST FLOOR	2939	273,03
<b>Total</b>	<b>6061</b>	<b>563,07</b>

Zoned Internal Area - Ground Floor

	<b>Sq Ft</b>	<b>Sq M</b>
Zone A	801	74,41
Zone B	1025	95,22
Zone C	1054	97,92
Remainder	242	22,48
<b>Total</b>	<b>3122</b>	<b>290,03</b>

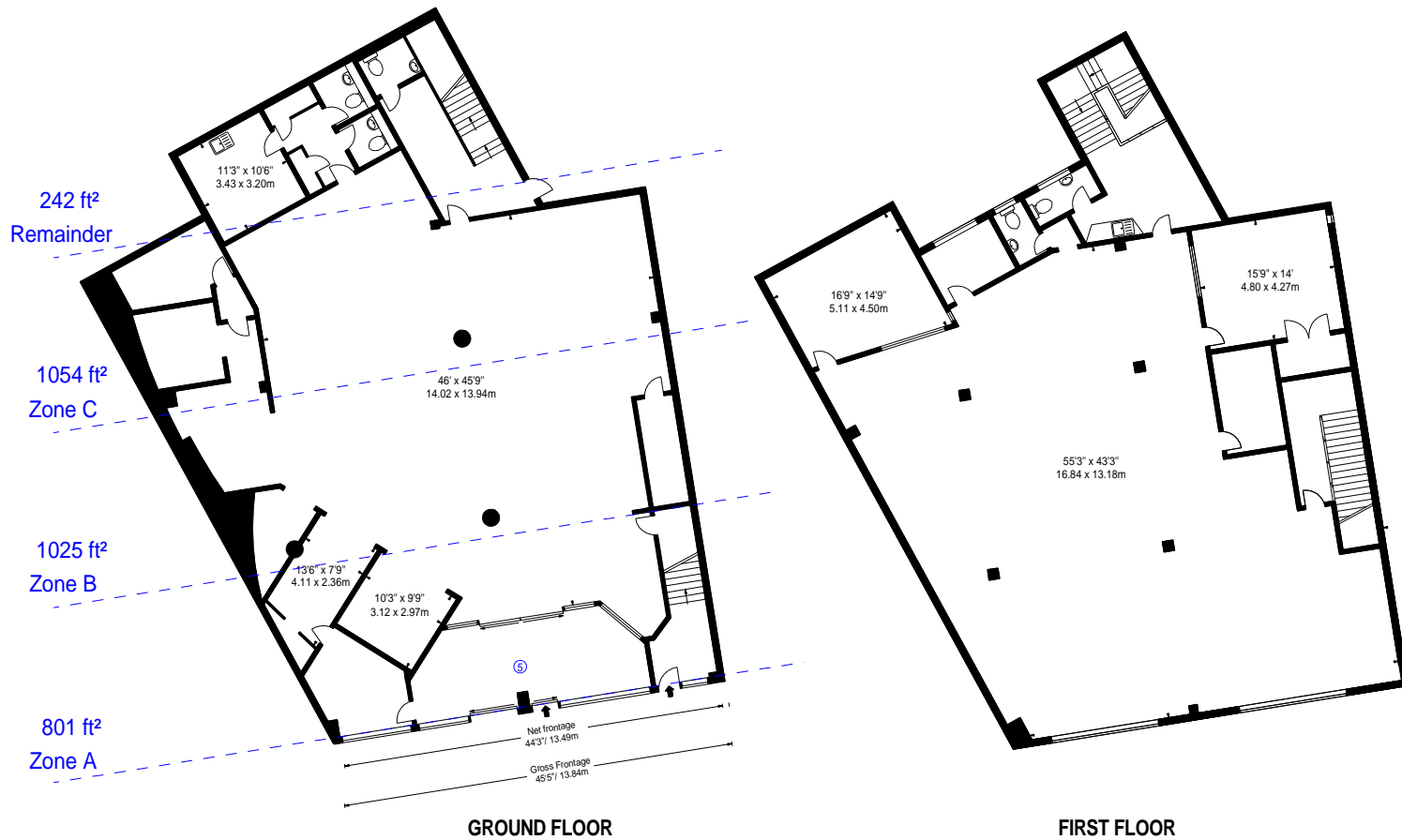
Frontages

	ft	m
Net Frontage	44'3"	13,49
Gross Frontage	45'5"	13,84




[www.bkrfloorplans.co.uk](http://www.bkrfloorplans.co.uk)

15-Dec-22



APPROX. NET INTERNAL AREA \*  
6061 Ft<sup>2</sup> - 563.07 M<sup>2</sup>

<p>Property Details:</p> <p><b>UNIT 5 - VACANT</b>  <b>55 - 57 WORCESTER STREET</b>  <b>KIDDERMINSTER</b>  <b>DY10 1E</b></p>		<p>Surveyed and Drawn By:</p> <p><b>BKR</b></p> <p>Hideaway Work Space          1 Empire Mews          London          SW16 2BF</p>
<p>SCALE - 1:250 @ A4</p>		<p>Tel: 0345 257 2023  <a href="mailto:info@bkrfloorplans.co.uk">info@bkrfloorplans.co.uk</a>  <a href="http://www.bkrfloorplans.co.uk">www.bkrfloorplans.co.uk</a></p>
<p>REFERENCE NUMBER : 103995</p>		<p><a href="http://www.bkrfloorplans.co.uk">www.bkrfloorplans.co.uk</a></p>
<p>Plans Drawn: 15.12.2022</p>		<p>© BKR 2022</p>

**VACANT  
6 OXFORD STREET  
KIDDERMINSTER  
DY10 1BB**

**Net Internal Area**

	<b>Sq Ft</b>	<b>Sq M</b>
GROUND FLOOR	893	82,96
Total	893	82,96

**Zoned Internal Area - Ground Floor**

	<b>Sq Ft</b>	<b>Sq M</b>
Zone A	585	54,35
Zone B	308	28,61
Total	893	82,96

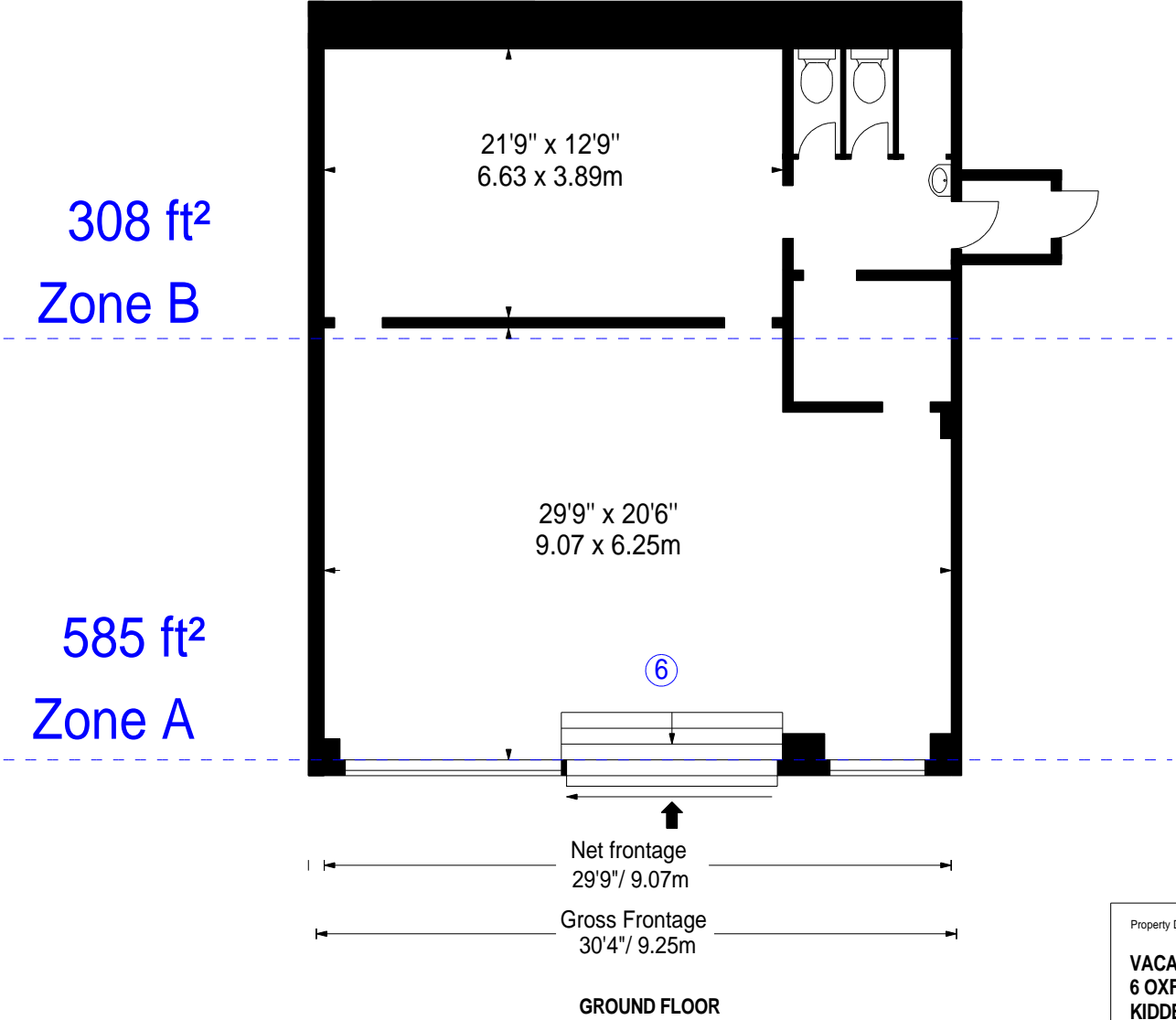
**Frontages**

	<b>ft</b>	<b>m</b>
Net Frontage	29'9"	9,07
Gross Frontage	30'4"	9,25



[www.bkrfloorplans.co.uk](http://www.bkrfloorplans.co.uk)

15-Dec-22



APPROX. NET INTERNAL AREA \*  
893 Ft<sup>2</sup> - 82.96 M<sup>2</sup>

Property Details:

VACANT  
6 OXFORD STREET  
KIDDERMINSTER  
DY10 1BB



Surveyed and Drawn By:



Hideaway Work Space  
1 Empire Mews  
London  
SW16 2BF

SCALE - 1:100 @ A4

REFERENCE NUMBER : 103995

Plans Drawn: 15.12.2022

Tel: 0345 257 2023  
info@bkrfloorplans.co.uk  
www.bkrfloorplans.co.uk

© BKR 2022