

**35-39 MURRAYGATE
DUNDEE
DD1 2EE**

Gross Internal Area

	Sq Ft	Sq M
BASEMENT	626	58.16
GROUND FLOOR	5150	478.44
FIRST FLOOR	941	87.42
Total	6717	624.01

Net Internal Area

	Sq Ft	Sq M
BASEMENT	462	42.92
GROUND FLOOR	3972	369.00
FIRST FLOOR	622	57.78
Total	5056	469.70

Zoned Internal Area - Ground Floor

	Sq Ft	Sq M
Zone A	718	66.70
Zone B	961	89.28
Zone C	1119	103.96
Remainder	1174	109.06
Total	3972	369.00

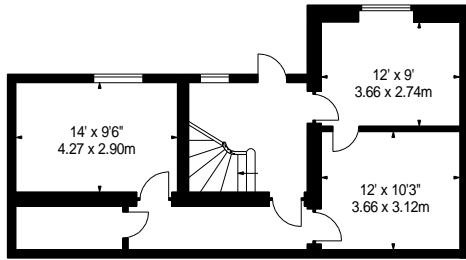
Frontages

	ft	m
Net Frontage	52'6"	16.00
Gross Frontage	54'	16.46

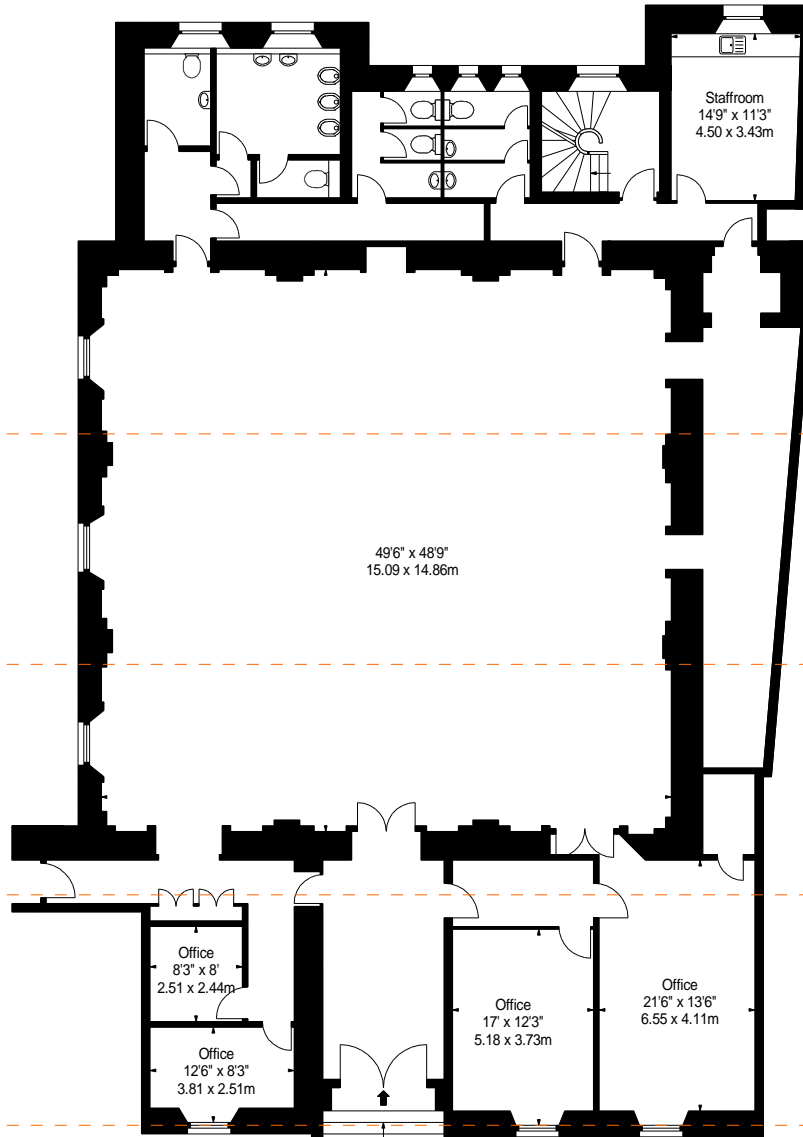


www.bkrfloorplans.co.uk

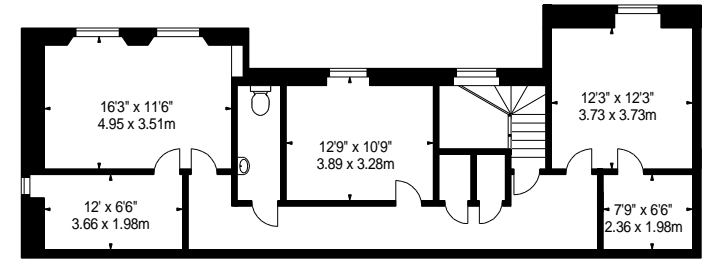
11-Mar-24



BASEMENT



GROUND FLOOR



FIRST FLOOR

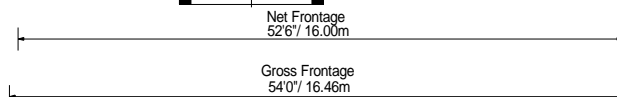
Remainder

Zone C



Zone B

Zone A

49'6" x 48'9"
15.09 x 14.86m



APPROX. GROSS INTERNAL AREA *
6717 Ft² - 624.01 M²

Property Details:	 	Surveyed and Drawn By:
35-39 MURRAYGATE DUNDEE DD1 2EE		Hideaway Work Space 1 Empire Mews London SW16 2BF
SCALE - 1:200 @ A4		Tel: 0345 257 2023
REFERENCE NUMBER :		info@bkrfloorplans.co.uk www.bkrfloorplans.co.uk
Plans Drawn: 11.03.2024		© BKR 2024