

**88 HAVERSTOCK HILL
LONDON
NW3 2BD**

Gross Internal Area - Shop

	Sq Ft	Sq M
LOWER GROUND FLOOR	427	39,67
GROUND FLOOR	314	29,17
Total	741	68,84

Net Internal Area - Shop

	Sq Ft	Sq M
LOWER GROUND FLOOR	338	31,40
GROUND FLOOR	287	26,66
Total	625	58,06

Zoned Internal Area - Ground Floor (Shop)

	Sq Ft	Sq M
Zone A	253	23,50
Zone B	34	3,16
Total	287	26,66

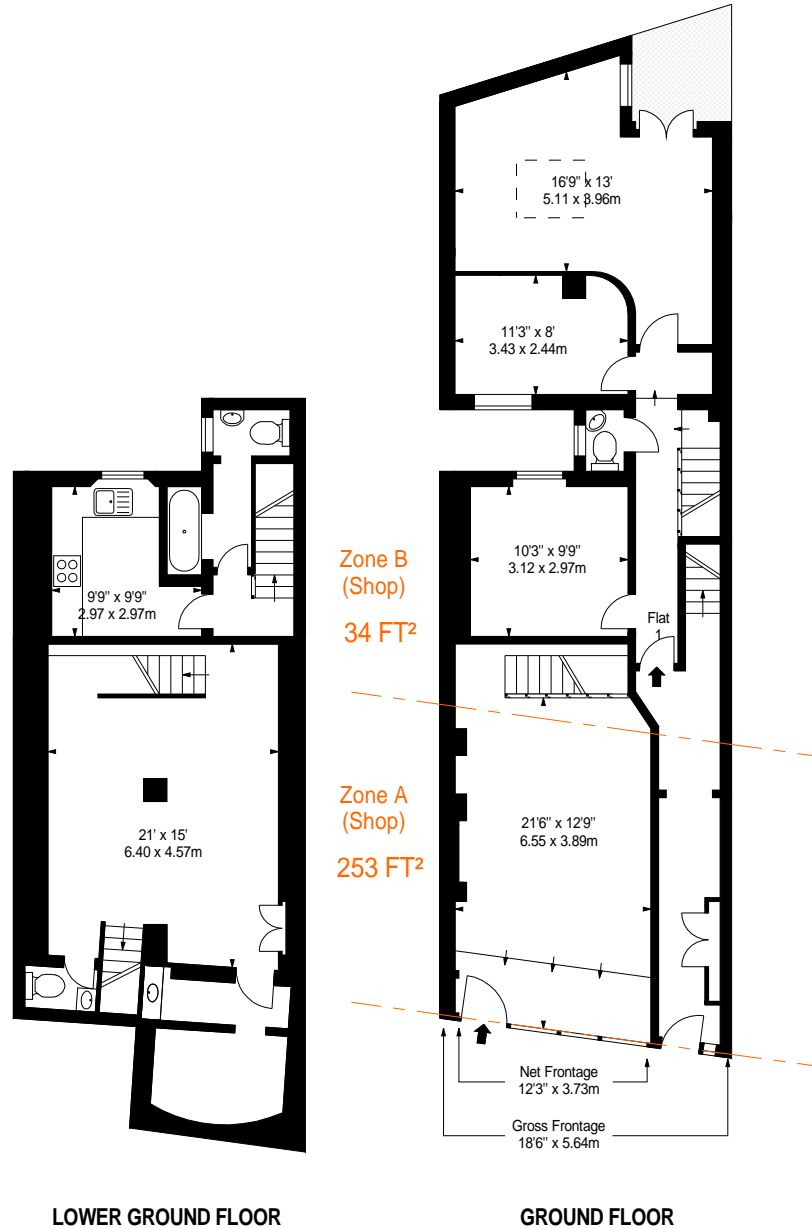
Frontages

	ft	m
Net Frontage	12'3"	3,73
Gross Frontage	18'6"	5,64



www.bkrfloorplans.co.uk


18-Sep-20



LOWER GROUND FLOOR

GROUND FLOOR

APPROX. GROSS INTERNAL AREA *
741 Ft² - 68.84 M²

<p>Property Details:</p> <p>88 & 88A HAVERSTOCK HILL LONDON NW3 2BD</p>		<p>Surveyed and Drawn By:</p> <p>BKR</p> <p>Hideaway Work Space 1 Empire Mews London SW16 2BF</p>
<p>SCALE 1:150 @ A4</p>		<p>Tel: 0345 257 2023 info@bkrfloorplans.co.uk www.bkrfloorplans.co.uk</p>
<p>Plans Drawn: 17.09.2020</p>		<p>© BKR 2020</p>