

**16 NEW GEORGE STREET
PLYMOUTH
DEVON
PL1 1RL**

Gross Internal Area

	Sq Ft	Sq M
GROUND FLOOR	2459	228.44
FIRST FLOOR	2416	224.45
SECOND FLOOR	2436	226.30
Total	7311	679.19

Net Internal Area

	Sq Ft	Sq M
GROUND FLOOR	1996	185.43
FIRST FLOOR	2198	204.19
SECOND FLOOR	2056	191.00
Total	6250	580.63

Zoned Internal Area - Ground Floor

	Sq Ft	Sq M
Zone A	545	50.63
Zone B	545	50.63
Zone C	409	38.00
Remainder	497	46.17
Total	1996	185.43

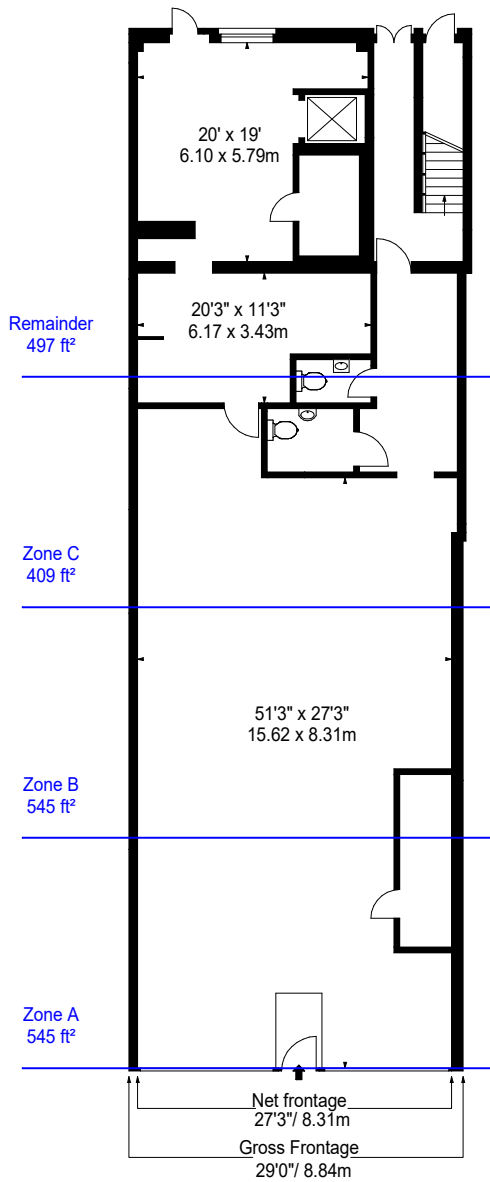
Frontages

	ft	m
Net Frontage	27'3"	8.31
Gross Frontage	29'	8.84

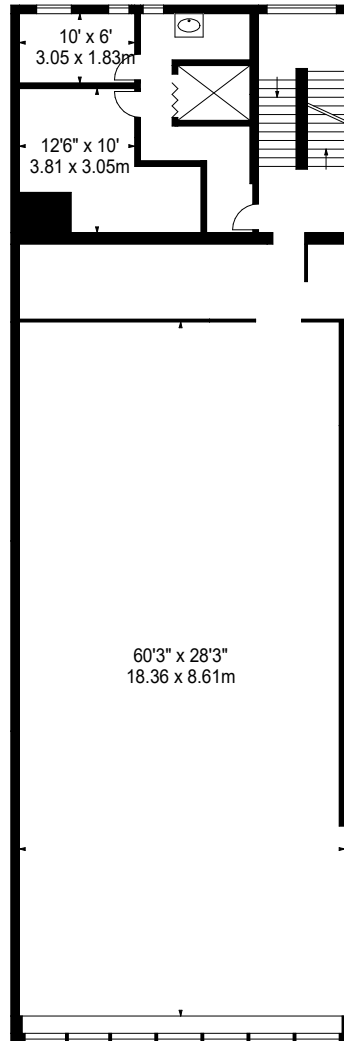


www.bkrfloorplans.co.uk

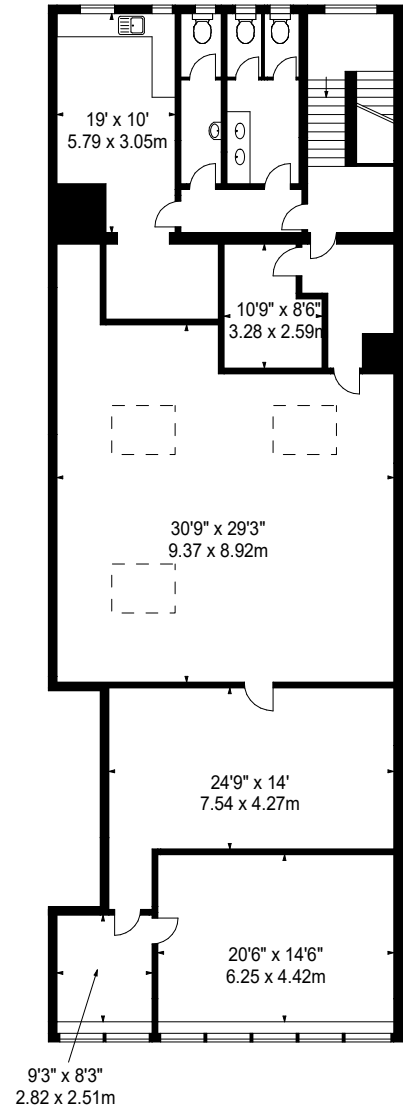
11-Aug-23



GROUND FLOOR



FIRST FLOOR



SECOND FLOOR

APPROX. GROSS INTERNAL AREA *
7311 Ft² - 679.19 M²

APPROX. NET INTERNAL AREA *
6250 Ft² - 580.63 M²

Property Details:

16 NEW GEORGE STREET
PLYMOUTH
DEVON
PL1 1RL

SCALE - 1:200 @ A4

REFERENCE NUMBER : 104990

Plans Drawn: 14.08.2023

Surveyed and Drawn By:



Hideaway Work Space
1 Empire Mews
London
SW16 2BF

Tel: 0345 257 2023
info@bkrfloorplans.co.uk
www.bkrfloorplans.co.uk

© BKR 2023