

**127 RUSHEY GREEN
LONDON
SE6 4AA**

Gross Internal Area

	Sq Ft	Sq M
LOWER GROUND FLOOR	498	46,26
GROUND FLOOR	1254	116,50
Total	1752	162,76

Net Internal Area

	Sq Ft	Sq M
LOWER GROUND FLOOR	456	42,36
GROUND FLOOR	818	75,99
Total	1274	118,35

Zoned Internal Area - Ground Floor

	Sq Ft	Sq M
Zone A	211	19,60
Zone B	287	26,66
Zone C	226	21,00
Remainder	94	8,73
Total	818	75,99

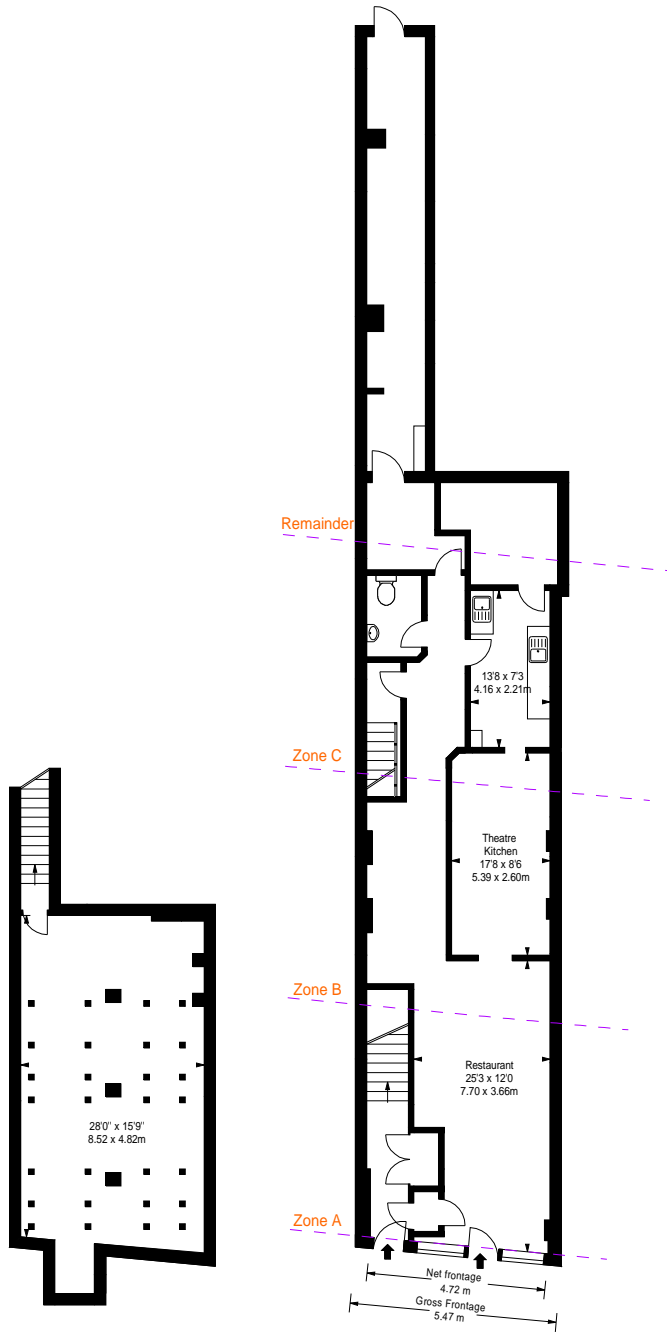
Frontages

	ft	m
Net Frontage	15'6"	4,72
Gross Frontage	18'	5,47



www.bkrfloorplans.co.uk


15-Feb-23




LOWER GROUND FLOOR

GROUND FLOOR

APPROX. GROSS INTERNAL AREA
 * 1752 Ft² - 162.76 M²

Property Details:	
127 RUSHEY GREEN LONDON SE6 4AA	
SCALE - 1:200 @ A4 REFERENCE NUMBER : 104240 Plans Drawn: 15.02.2023	

Surveyed and Drawn By: 
Hideaway Work Space 1 Empire Mews London SW16 2BF
Tel: 0345 257 2023 info@bkrfloorplans.co.uk www.bkrfloorplans.co.uk © BKR 2023