

**LAUREL HOUSE
LAURELHILL BUSINERS PARK
STIRLING
FK7 9JQ**

Gross Internal Area

	Sq Ft	Sq M
GROUND FLOOR	7598	705.85
FIRST FLOOR	10360	962.44
SECOND FLOOR	10300	956.87
Total	28258	2,625.17

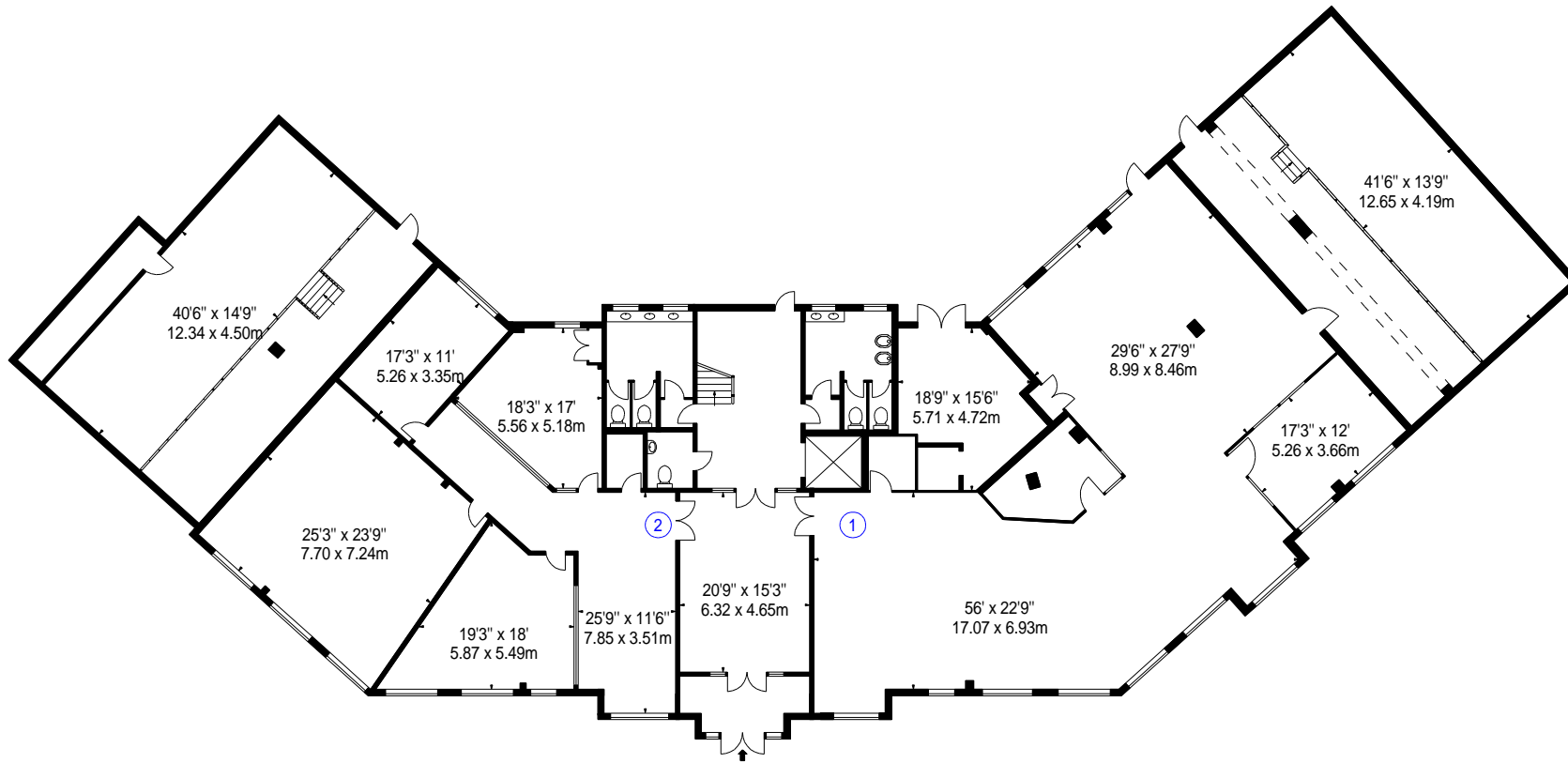
Net Internal Area (Office)

	Sq Ft	Sq M
OFFICE 1	3513	326.36
OFFICE 2	1747	162.30
OFFICE 3	5325	494.69
OFFICE 4	3675	341.41
OFFICE 5	5356	497.57
OFFICE 6	3900	362.31
Total	23516	2,184.64



www.bkrfloorplans.co.uk

6-Sep-23



GROUND FLOOR

APPROX. GROSS INTERNAL AREA *
28258 Ft² - 2625.17 M²

APPROX. NET INTERNAL AREA *
23516 Ft² - 2184.64 M²

Property Details:

LAUREL HOUSE
LAURELHILL BUSINESS PARK
STIRLING
FK7 9JQ

SCALE - 1:250 @ A4

REFERENCE NUMBER : 105103

Plans Drawn: 08.09.2023

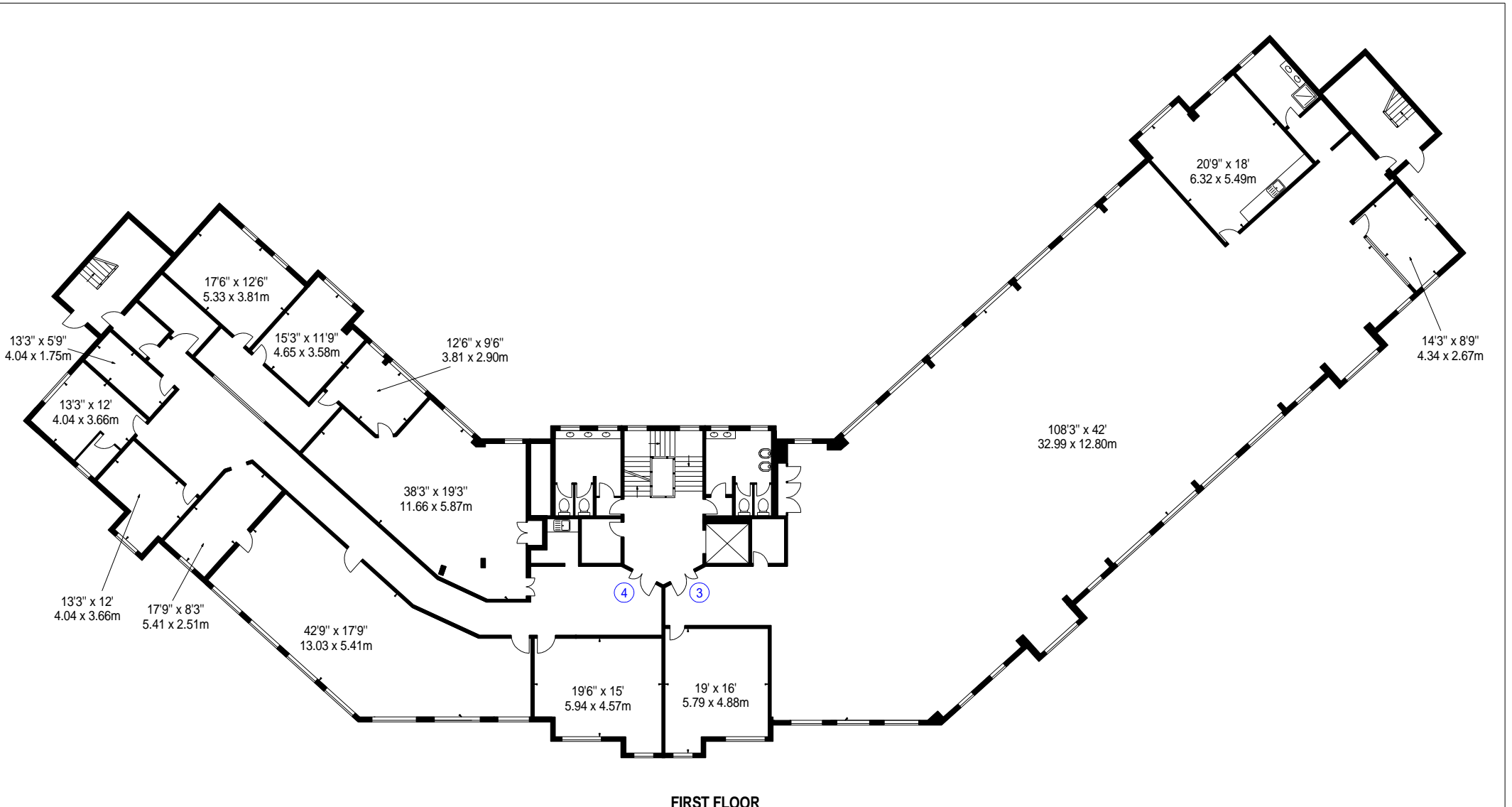
Surveyed and Drawn By:



Hideaway Work Space
1 Empire Mews
London
SW16 2BF

Tel: 0345 257 2023
info@bkrfloorplans.co.uk
www.bkrfloorplans.co.uk

© BKR 2023



FIRST FLOOR

APPROX. GROSS INTERNAL AREA *
28258 Ft² - 2625.17 M²

APPROX. NET INTERNAL AREA *
23516 Ft² - 2184.64 M²

Property Details:

LAUREL HOUSE
LAURELHILL BUSINERS PARK
STIRLING
FK7 9JQ

SCALE - 1:250 @ A4

REFERENCE NUMBER : 105103

Plans Drawn: 08.09.2023

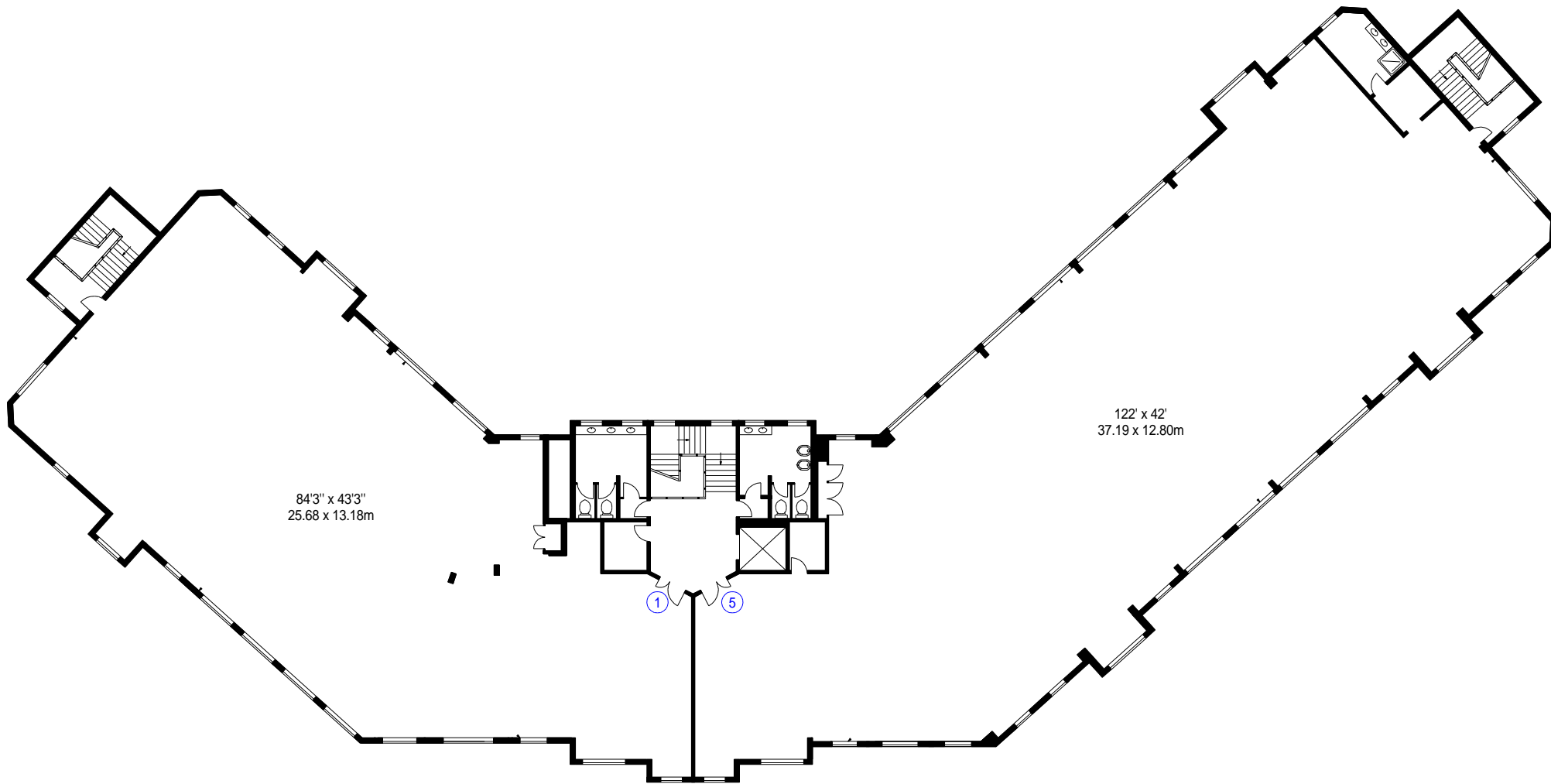
Surveyed and Drawn By:



Hideaway Work Space
1 Empire Mews
London
SW16 2BF

Tel: 0345 257 2023
info@bkrfloorplans.co.uk
www.bkrfloorplans.co.uk

© BKR 2023



SECOND FLOOR

APPROX. GROSS INTERNAL AREA *
 28258 Ft² - 2625.17 M²

APPROX. NET INTERNAL AREA *
 23516 Ft² - 2184.64 M²

Property Details:	Surveyed and Drawn By:
LAUREL HOUSE LAURELHILL BUSINERS PARK STIRLING FK7 9JQ	BKR
SCALE - 1:250 @ A4	Hideaway Work Space 1 Empire Mews London SW16 2BF
REFERENCE NUMBER : 105103	Tel: 0345 257 2023 info@bkrfloorplans.co.uk www.bkrfloorplans.co.uk
Plans Drawn: 08.09.2023	© BKR 2023