

**37-39 TERRACE ROAD  
ABERYSTWYTH  
WALES  
SY23 2AE**

Net Internal Area

	Sq Ft	Sq M
GROUND FLOOR	1988	184,69
FIRST FLOOR	1685	156,54
Total	3673	341,22

Gross Internal Area

	Sq Ft	Sq M
SECOND FLOOR	952	88,44
Total	952	88,44

Zoned Internal Area - Ground Floor

	Sq Ft	Sq M
Zone A	674	62,61
Zone B	687	63,82
Zone C	589	54,72
Remainder	37	3,44
Total	1987	184,59

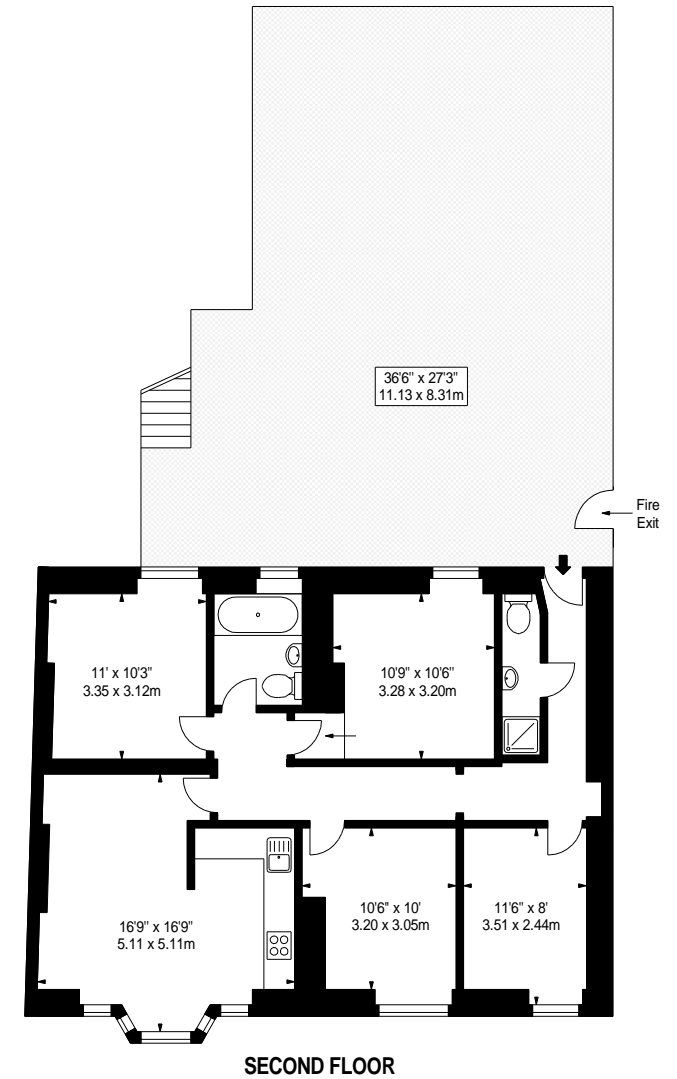
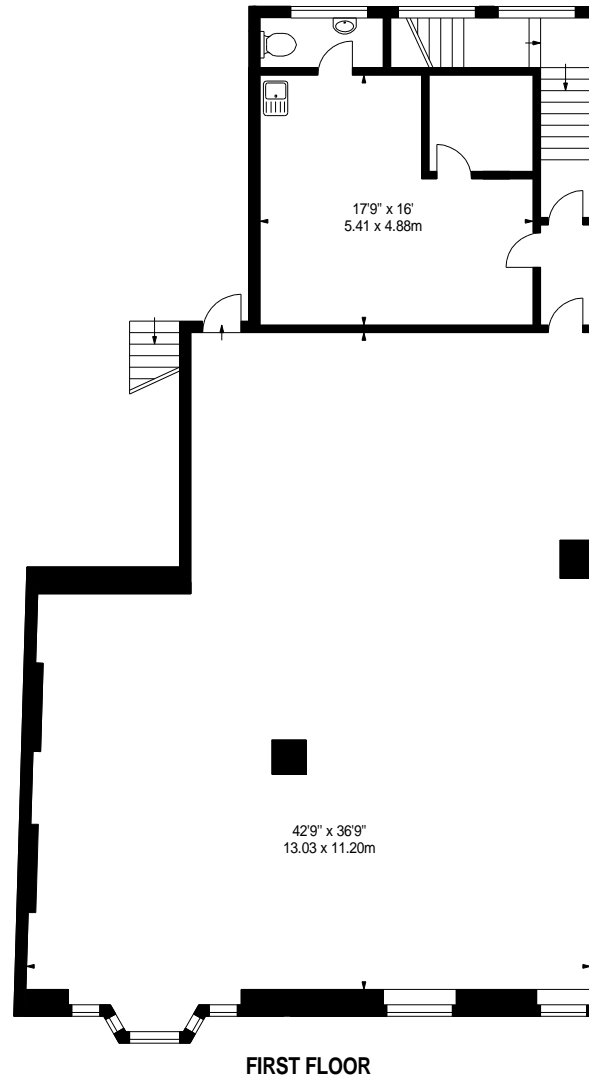
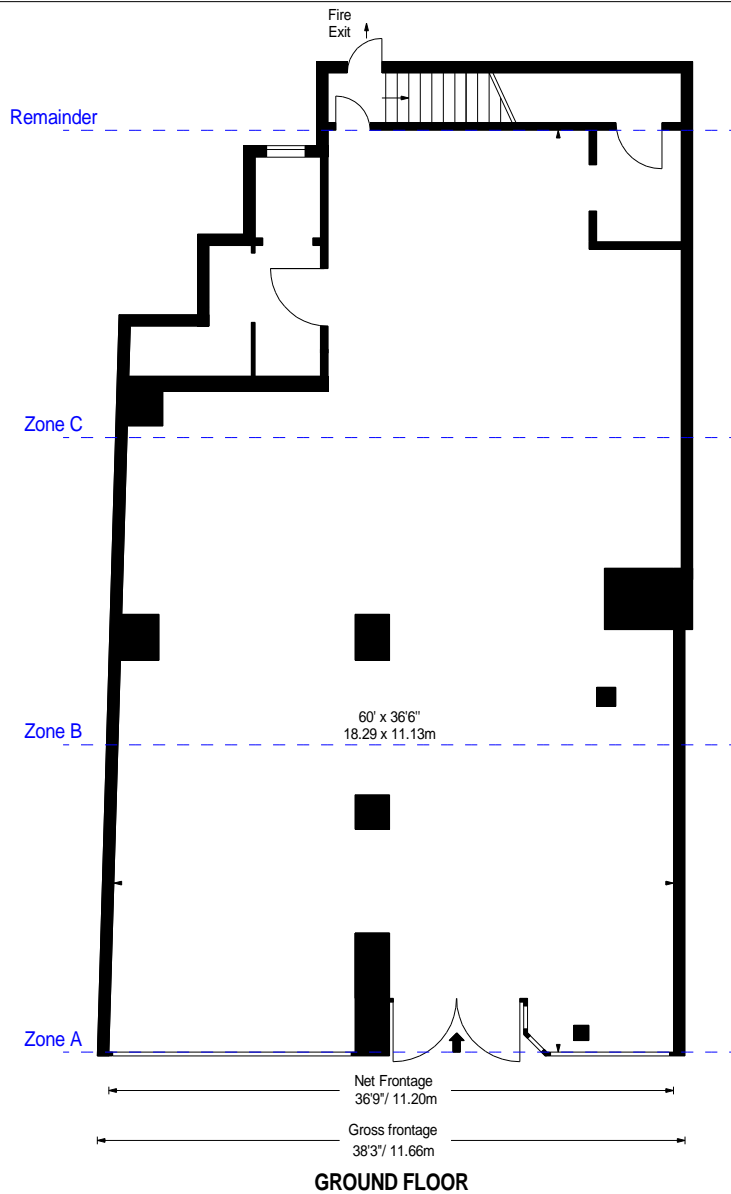
Frontages

	ft	m
Net Frontage	36'9"	11,20
Gross Frontage	38'3"	11,66




[www.bkrfloorplans.co.uk](http://www.bkrfloorplans.co.uk)

3-Jan-23



**APPROX. GROSS INTERNAL AREA \***  
4926 Ft<sup>2</sup> - 457.63 M<sup>2</sup>

Property Details: <b>37-39 TERRACE ROAD ABERYSTWYTH WALES SY23 2AE</b>		Surveyed and Drawn By: <b>BKR</b> Hideaway Work Space 1 Empire Mews London SW16 2BF
SCALE - 1:150 @ A4		Tel: 0345 257 2023 info@bkrfloorplans.co.uk www.bkrfloorplans.co.uk
REFERENCE NUMBER : 104039		© BKR 2023
Plans Drawn: 03.01.2023		