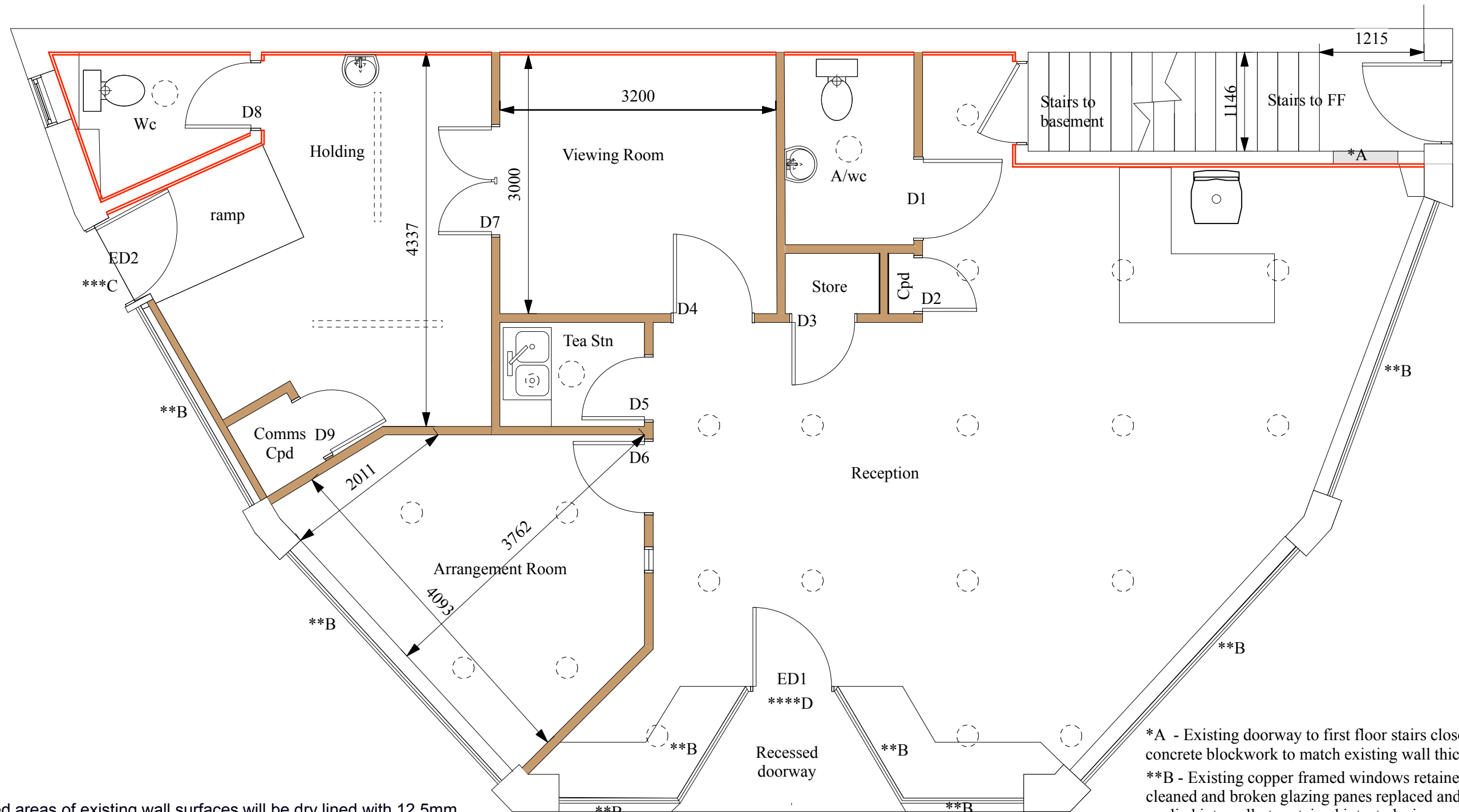
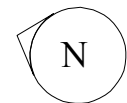


1-2 STATION STREET, SPALDING, PE11 1EF
EXISTING GROUND FLOOR - 1:100 @ A4

1:100





Selected areas of existing wall surfaces will be dry lined with 12.5mm foilbacked plasterboard complete with filled and taped joints and plaster skim finish.

New stud partitioning comprising 70AS 50 Acoustuds at 600mm centres, 50mm Isover acoustic insulation between studs & 12.5mm Gyproc Soundbloc boards with taped joints and plaster skim finish to both sides of studwork

Broken line symbols indicate potential locations of new light fittings.

*A - Existing doorway to first floor stairs closed off with concrete blockwork to match existing wall thickness
**B - Existing copper framed windows retained, frames cleaned and broken glazing panes replaced and safety film applied internally to retained intact glazing
***C - Existing glazed timber door and frame retained; safety film applied to internal face of glazing
****D - New timber glazed door and frame installed to replace automatic aluminium sliding door; door decoration to match retained door ED2

0 1 2 3 4 5 M



Title

Proposed GF Plan - Scale 1 : 50 @ A3

Drawing Number

TJCQS/1-2SSS/02

Drawn By

TJ

Date

14.08.2017

CAD File Name

1- 2 Station Street, Spalding