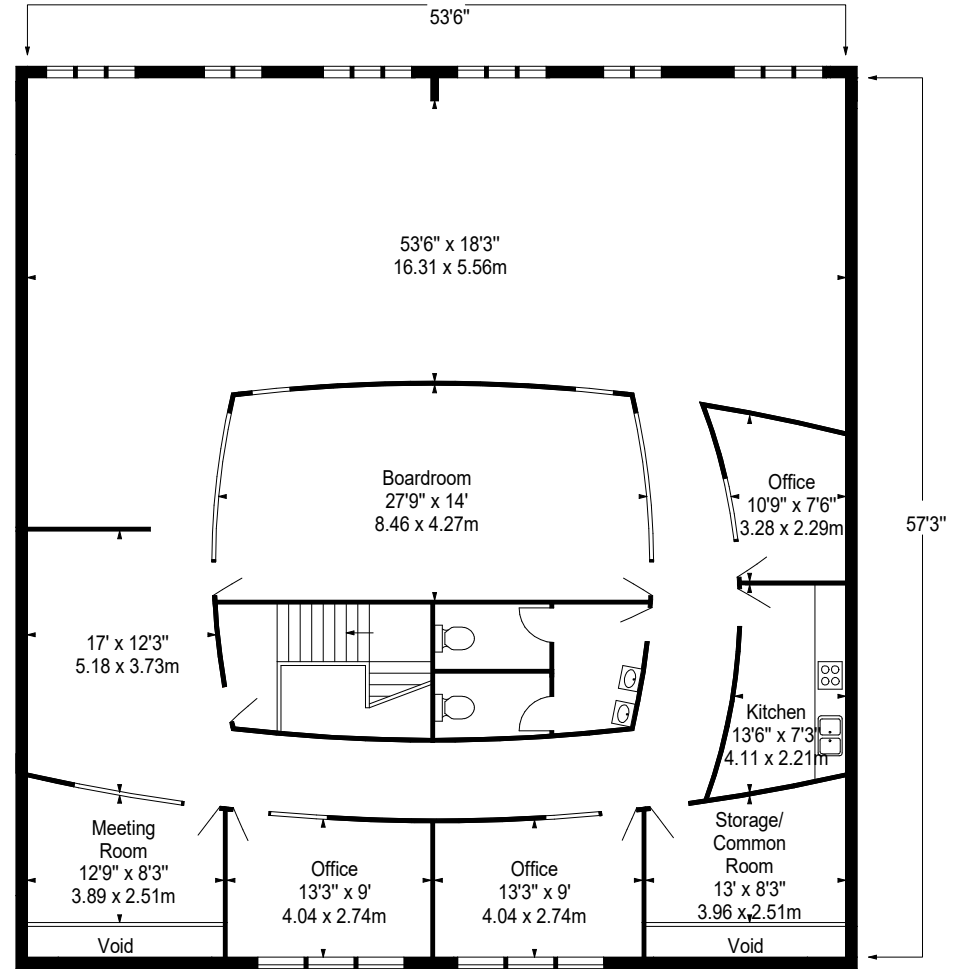




GROUND FLOOR
3106 ft²



FIRST FLOOR
3003 ft²

APPROX. GROSS INTERNAL AREA *
6109 Ft² - 567.53 M²

Property Details: UNITS B & C COXBRIDGE BUSINESS PARK FARNHAM SURREY GU10 5EH		Surveyed and Drawn By:  Hideaway Work Space 1 Empire Mews London SW16 2BF
SCALE - 1:150 @ A4		Tel: 0345 257 2023 info@bkrfloorplans.co.uk www.bkrfloorplans.co.uk
REFERENCE NUMBER : 104999		Plans Drawn: 23.08.2023
Plans Drawn: 23.08.2023		© BKR 2023