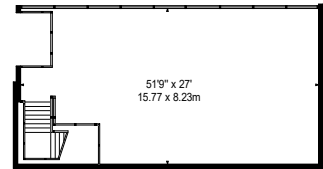
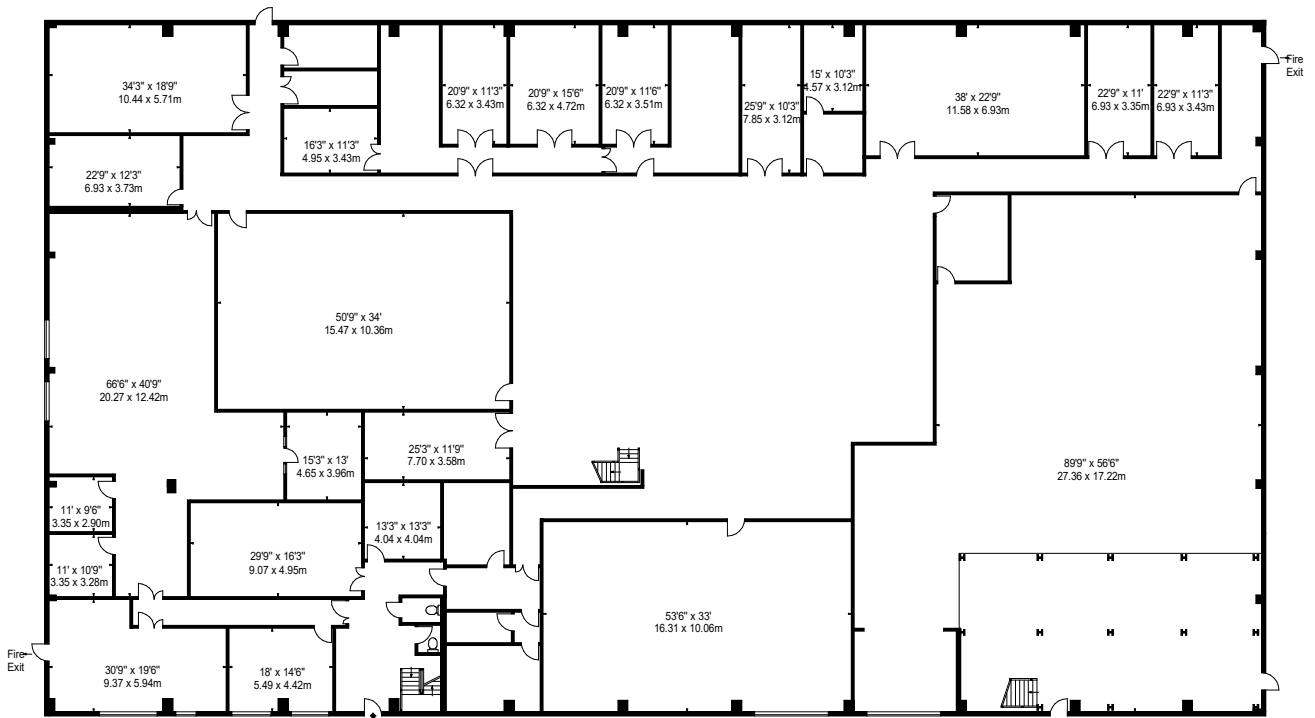


FIRST FLOOR



GROUND FLOOR
MEZZANINE



GROUND FLOOR

APPROX. GROSS INTERNAL AREA *
29585 Ft² - 2748.45 M²
(Including Mezzanine)

Property Details:
UNIT F
MERIDIAN EAST
MERIDIAN BUSINESS PARK
LEICESTER
LE19 1WZ



Surveyed and Drawn By:



Hideaway Work Space
1 Empire Mews
London
SW16 2BF

SCALE - 1:400 @ A4

REFERENCE NUMBER : 105909

Plans Drawn: 02.08.2024

Tel: 0345 257 2023
info@bkrfloorplans.co.uk
www.bkrfloorplans.co.uk

© BKR 2024